

2018

LOG HOMES

BUILDING MEMORIES

ONE LOG AT A TIME

DREAM

YOUR CABIN ESCAPE

Everlast Log™

P.5
→

MODELS

- ✓ Mountain Haven P.10
- ✓ Alpine Ridge P.14
- ✓ Hampton P.17
- ✓ Windsor P.20

Conestoga
LOG CABINS & HOMES

ConestogaLogHome.com

Since 1983,

Conestoga Log Cabins & Homes has been making our customers' dreams become reality. Our cabins and homes are located in every state throughout the U.S. as well as 7 foreign countries. Conestoga Log Cabins & Homes stands today as a reflection of our unending commitment to our customers and making their dreams come true.

Conestoga has become a leading provider of log cabins and homes by building a reputation for designing, manufacturing, and supplying attractive, economical, long-lasting buildings.

Conestoga manages each new home from the design phase to assembly to finishing touches. We utilize the newest technology available and engineer our own logs. The result is an energy efficient home that is as structurally strong as it is versatile.

Let's explore your vision and see how Conestoga can help you build your dream home.

.....
ConestogaLogHome.com

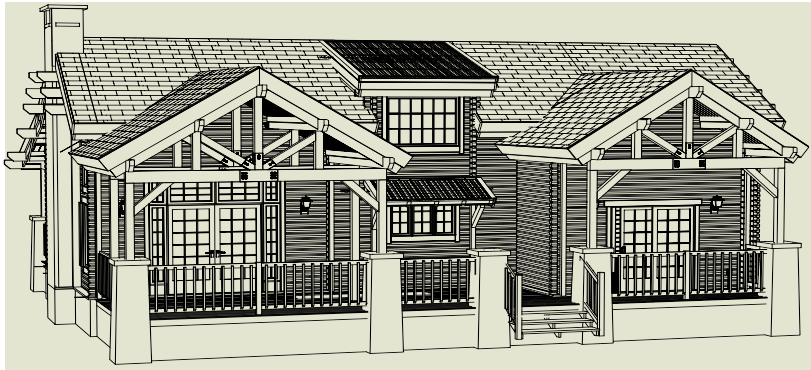
"It was truly a joy working with Conestoga, and we are absolutely ecstatic about our new Outdoorsman cabin." - Sullivan County, PA

"...buying a Conestoga Log Cabin was a most memorable happy experience for my family... I believe I will look back on this adventure in ten years and know that it was one of the best things I have done for my family and myself." - Hazleton, PA



Conestoga Build

Conestoga Log Cabins & Homes makes every effort to simplify the building & assembly process long before your cabin kit ships from our 100,000 Sq. Ft. state-of-the-art manufacturing facility.



It all starts in the Drafting Department, where each log home is built electronically utilizing the latest in 3-D architectural software.



Once approved, most components of the building are sent to our highly automated manufacturing equipment. We also use carefully selected suppliers chosen not only for their quality of products but the dependability of their work.



This formula has worked for decades to the delight of our customers, and it is our commitment to making it work for you, too!

To see a video of structures being built, please visit our video library:

ConestogaLogHome.com/videos

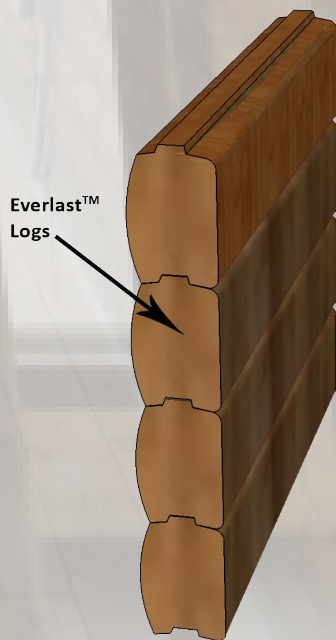
We Can Meet Any Energy Code

Conestoga Log Cabins & Homes offers two different insulation packages. Both take advantage of thermal mass and the Everlast™ Log; a log engineered to allow for longer lengths, fewer twists, checks and considerably less gapping than traditional log structures. The result is less air infiltration that provides a more comfortable energy efficient building that saves money while you enjoy your log cabin.

What is Thermal Mass? Thermal Mass is a concept in building design and construction that describes how the walls of the building provide “inertia” against temperature fluctuations. By their very nature log cabins and log homes differ from other construction techniques, because solid wood has both moderate R-value (insulation) and significant thermal mass.

Single Wall

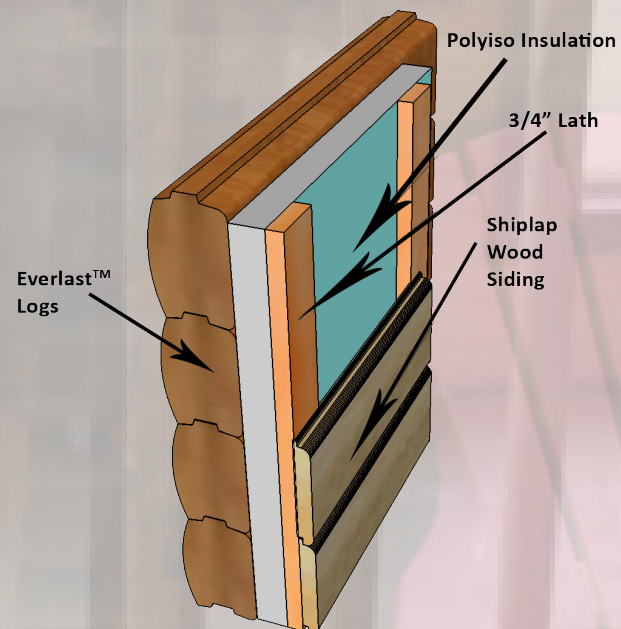
The single wall is perfectly suited for cabins that are located in moderate climates and/or are used seasonally.



Single Wall Siding Package

This is recommended for year round residences in cold weather climates. This package adds a layer of insulation and interior log siding to a single wall structure. This technology will meet or exceed the most stringent energy code requirements.

R-16 to R-26 Based On Thickness of Insulation

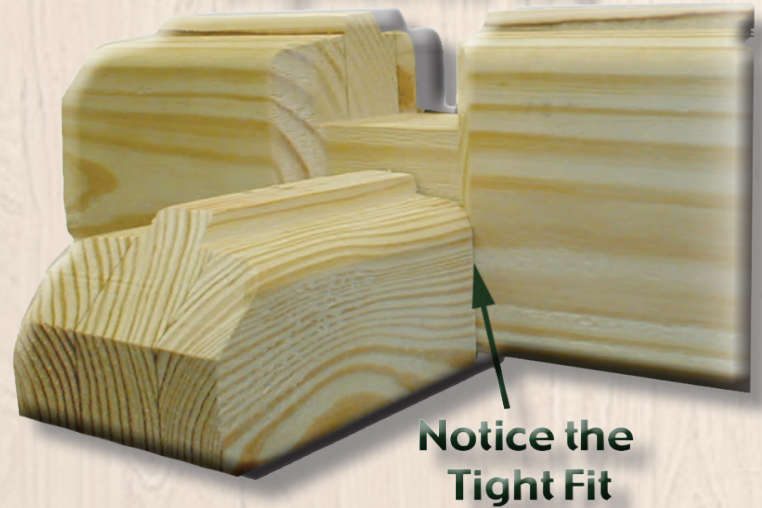


Conestoga's Everlast Log™

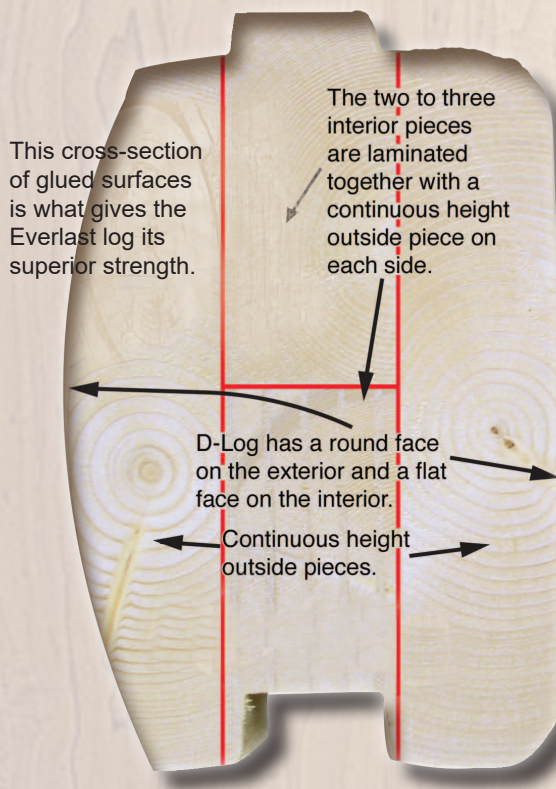
Offers a low maintenance solution

- The Everlast™ Log is resistant to warping, twisting and settling because it is engineered to be structurally stable.
- The Everlast™ Log is resistant to movement, shrinkage, and checking, because it is kiln-dried to 15% or below moisture content.
- The Everlast™ Log is resistant to decay, because it is kiln-dried below the 19% fungi threshold.
- The Everlast™ Log is notched, cut to length, drilled, and mortised for all electric and fasteners.
- The Everlast™ Log can be up to 28' long, which eliminates unsightly log joints, reduces the possibility of air and water infiltration and improves overall energy efficiency.
- The Everlast™ Log is 50% stronger than traditional logs

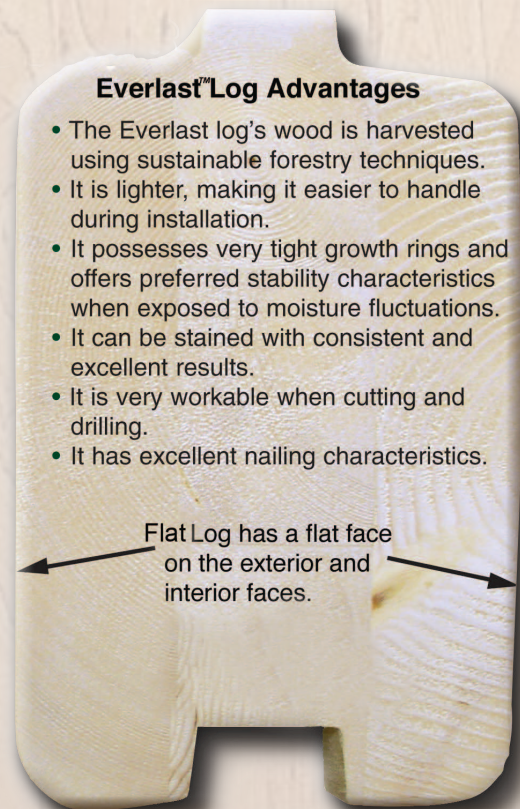
The Stronger and More Stable Engineered Log



D-Log



Flat Log



Conestoga Log Home Owners

"As you know, the town and neighboring communities where our cabin is located was declared a national disaster area from Hurricane Irene. Our cabin suffered NO damage and is a solid Conestoga log cabin." - Windham, NY

"We enthusiastically recommend Conestoga to anyone who wants a beautiful cabin that is extremely well constructed, affordable, environmentally conscious and customizable." - Sullivan County, PA

"All of my expectations were met by Conestoga Log Cabins. I will certainly be recommending Conestoga as the best choice in log cabin kits." - Yellow Spring, WV

"This ended up being the absolute best home we could build for the money that we spent."
- Portland, ME

"Where you [Conestoga] excel is in your flexibility with your team in meeting changing design requirements, delivering timely design changes and quotes." - Killeen, TX

**If you would like to speak directly to any of our customers,
please give us a call and we can put you in touch.**

Every Log Home Kit Includes:

Floor System:

- Sill Sealer
- Pressure Treated Sill Plates
- 2" x 10" or 2" x 12" Double Boxboard
- 2" x 10" or 2" x 12" Floor Joists
- Galvanized Metal Bridging
- Construction Adhesive
- ¾" Advantech Sub-Floor

Log Wall System:

- Everlast Kiln-Dried Logs: Pre-cut/Pre-drilled
- Everlast Kiln-Dried Gable End Logs: Pre-cut/Pre-drilled
- Log Fasteners
- Emseal Gasket Material

Windows:

- Double Hung Low-E Clad Windows
- Egress Windows - Casement Low-E
- Window Bucks
- Interior & Exterior Window Trim

Doors:

- Insulated Steel 9-lite 2 Panel Exterior
- Pre-Hung 6 Panel Wood Interior Doors
- Door Bucks
- All Door Hardware
- Interior & Exterior Door Trim

2nd Floor System:

- Laminated Beams & Posts
- 2" x 10" or 2" x 12" Floor Joists
- ¾" Advantech Subfloor or 2" x 6" T&G Loft Floor Boards
- 1" x 6" T&G 1st Floor Ceiling Boards
- Pre-manufactured Staircase
- Hand Railings, Posts & Pickets

Roof System:

- Ridge Beam with 2" x 12" Rafters OR Pre-Manufactured Trusses
- 5/8" Roof Sheathing
- 2" x 4" Roof Nailers
- R38 Fiberglass Insulation
- 1" x 6" T&G Ceiling Boards
- 15 lb. Felt Paper
- Fascia & Rake Boards
- Soffit Material
- Gable End Overhang Framing
- 45 yr. Metal Roofing

Interior Finish Materials:

- 2" x 4" Interior Partition Walls
- 2" x 6" Interior Partition Walls (Plumbing Walls)
- Top & Bottom Plates for Partition Walls
- All Headers with ½" CDX filler
- 1" x 6" Shiplap Interior Wall Boards
- Interior Baseboard Trim
- Interior Wall Trims

Porch Materials:

- Pressure Treated Floor Joists
- Joist Hangers
- Pressure Treated Decking
- Porch Posts, Railings & Pickets
- Porch Roof Framing
- ALL Roofing Materials & Trims

Electrical:

- Electrical Wiring & Grommets
- Boxes, Switches & Outlets
- Interior Light Fixtures & Bulbs
- Smoke & CO₂ Detectors
- Exterior Lights

Accessories:

- Fasteners (Nails, Screws & Brackets)
- Caulking
- Construction Adhesive

Options:

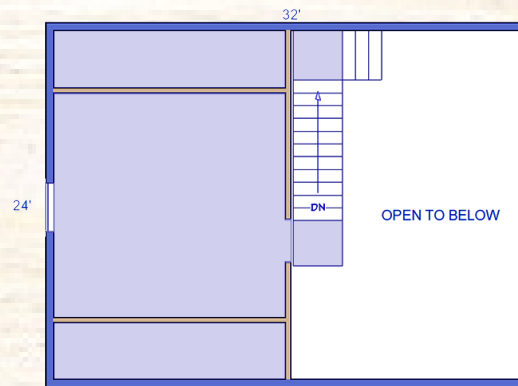
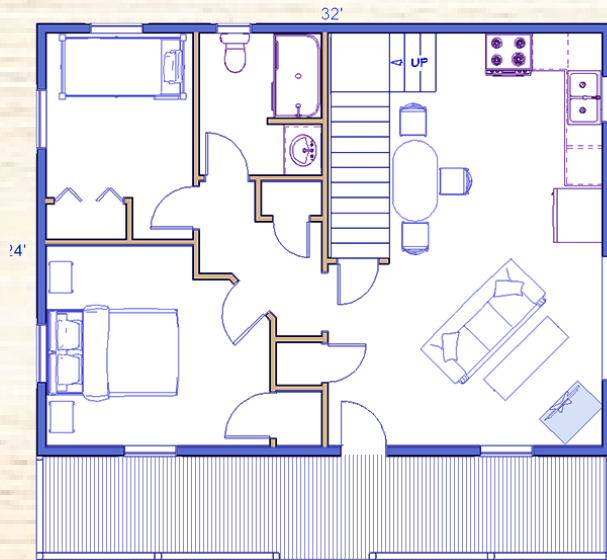
- Decks
- Porch Extensions & Side Porches
- Garages
- Dormers
- Custom Doors & Windows
- Log Wall Insulation Package
- Floor Insulation
- 30 Year Shingle
- 1' x 6' Unfinished Flooring
- Interior Polyurethane
- Exterior Stain

Heavy roof and floor loading, high altitude, seismic, hurricane, nordic, tropical and other extreme weather building specifications are available as an upgrade.



1,143 Sq. Ft.
3 Bedrooms
1 Bathroom

This 24' x 32' log cabin has two first-floor bedrooms with a spacious loft. This cabin places a premium on living space with a generous, comfortable great room, open kitchen area, and large 6' x 32' covered front porch.



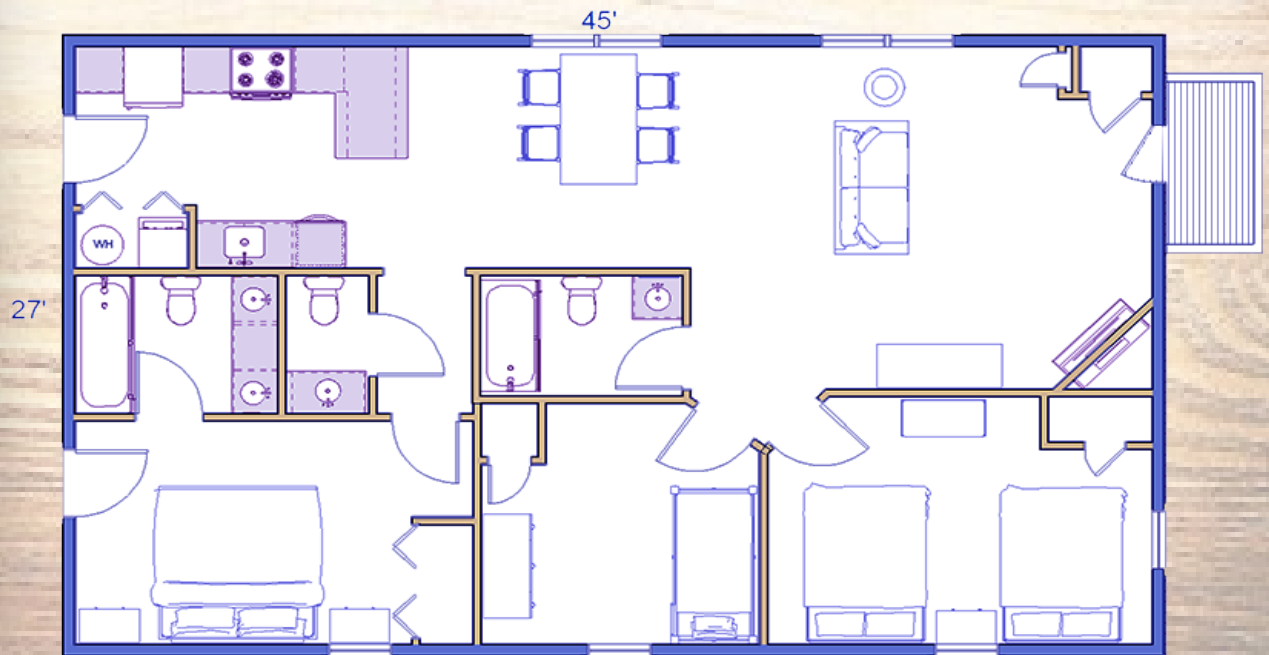
SUSQUEHANNA

MEADOWBROOK

1,215 Sq. Ft.
3 Bedrooms
2.5 Bathrooms



The 27' x 45' log cabin offers three bedrooms, two-and-a-half baths, and all the convenience of single floor living. Coupled with a spacious living room, this model is perfectly designed for the empty nester looking to keep things simple, but spacious enough for guests.



Images of products are for illustrative purposes only.



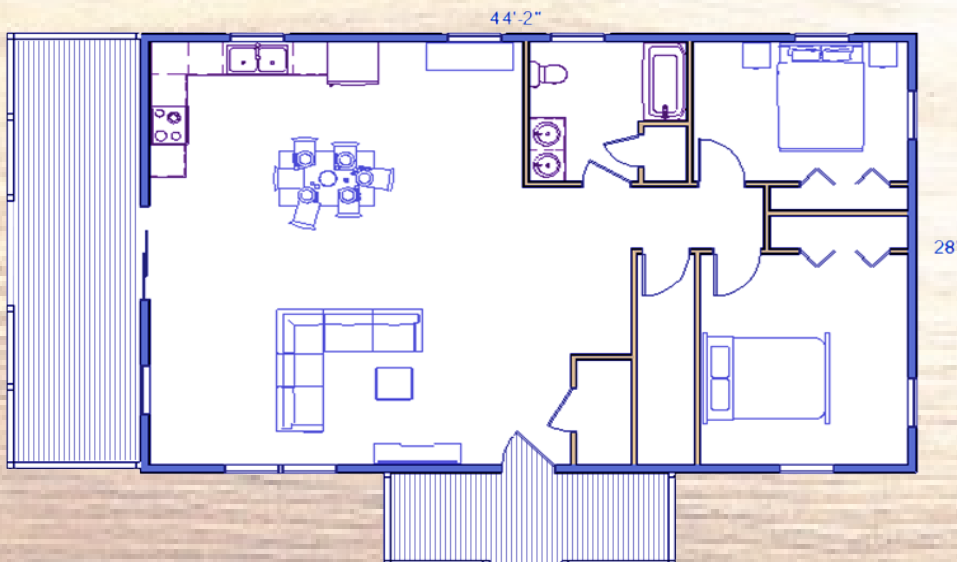
*Custom porch shown



1,232 Sq. Ft.
2 Bedrooms
1 Bathroom

The Riverview is the ideal cabin for those who want practical living space on one convenient level. Two bedrooms, a full bath, a spacious kitchen/dining area, and a living room provide plenty of comfy, inside living space. Side and front porches flow seamlessly from inside and offer room to relax and spend quality time enjoying the pleasures of the great outdoors.

RIVERVIEW

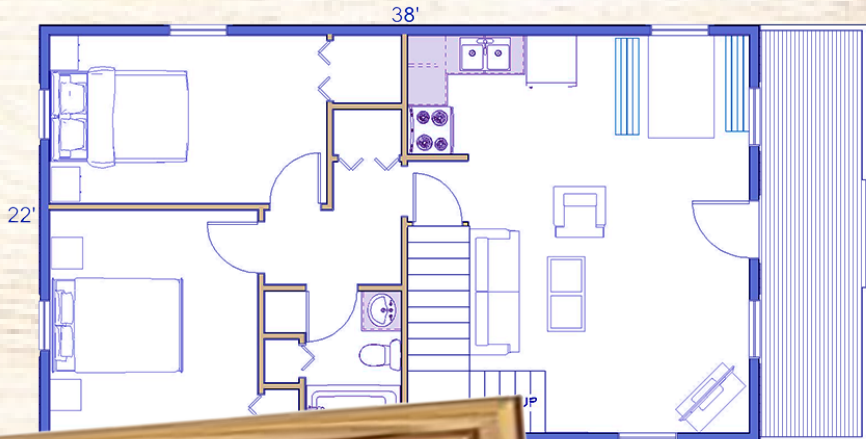
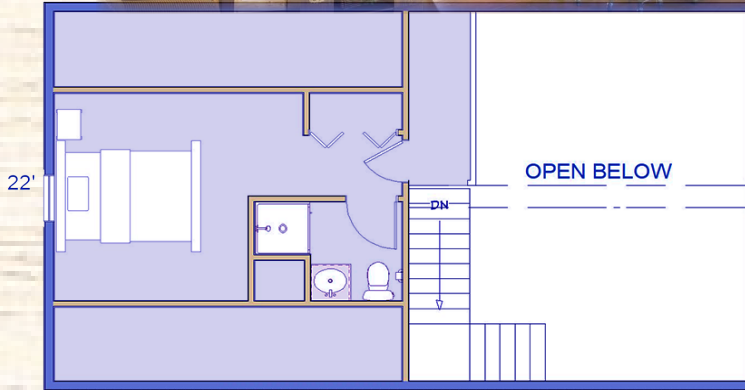


MOUNTAIN HAVEN

1,254 Sq. Ft.
3 Bedrooms
2 Bathrooms



This beautiful 22' x 38' log cabin kit offers all the luxuries of the original Mountain King, but with more space! For those that desire luxury, extra space, and unparalleled comfort; this is the cabin you're looking for. Two bedrooms coupled with a spacious loft make this cabin a perfect option.

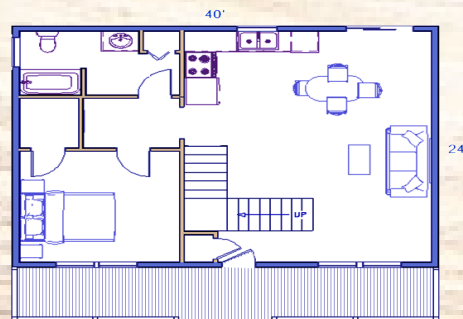
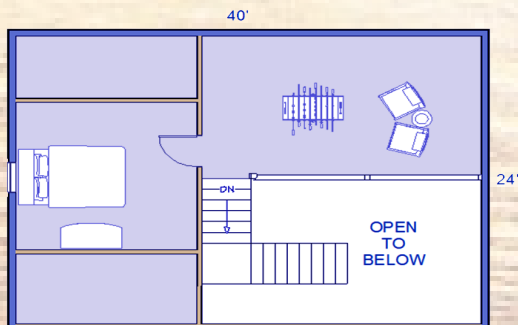


1,284 Sq. Ft.
2 Bedrooms
1 Bathroom

SILVER CREEK



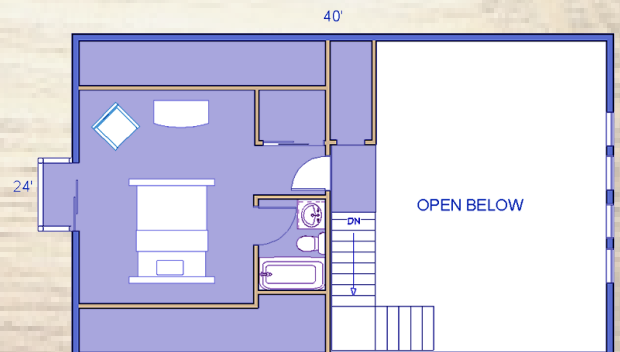
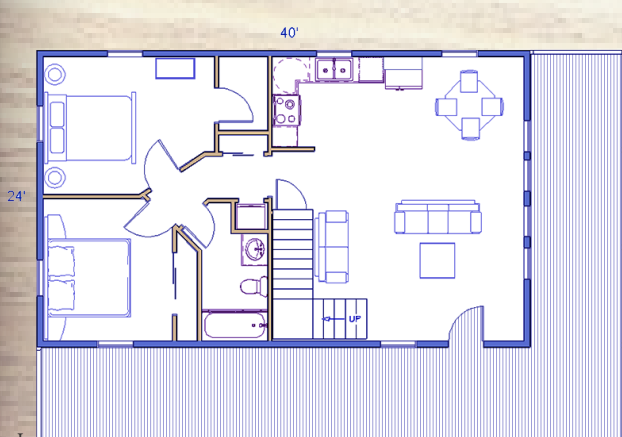
This 24' x 32' two-bedroom, full-bath cabin offers an exceptionally convenient use of space. Large loft with second-floor bedroom is perfectly suited to accommodate your guests. This cabin features enough space for large kitchen, dining, and living rooms. With its 6' x 32' covered porch, it has more than enough room to enjoy a log cabin lifestyle.



ASPEN CHALET

1,440 Sq. Ft.
3 Bedrooms
2 Bathrooms

This 24' x 40' log cabin is the essence of simplicity, which makes it an exceptional value in cabin living. This cabin boasts a spacious kitchen and a fantastic great room with floor to ceiling windows to view the leaves change in the fall. Plenty of storage and bedrooms make this a practical solution for you and your guests.



Images of products are for illustrative purposes only.

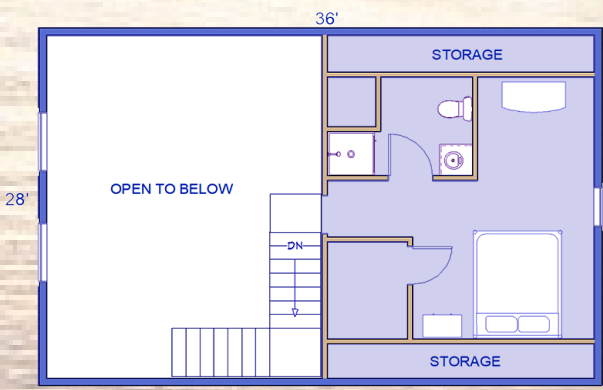
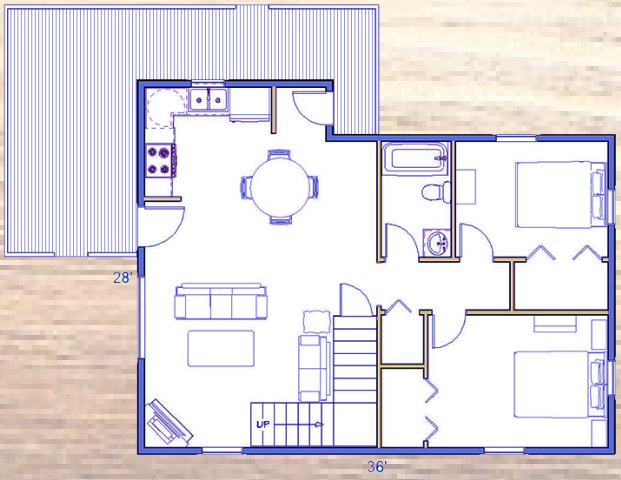
RAINGER



1,448 Sq. Ft.
3 Bedrooms
2 Bathrooms

This 24' x 36' log home demonstrates impressive living and storage space. Three bedrooms and 2 full bathrooms with laundry area located on the first floor provide a convenient

floor plan for a busy family. The covered porch connects to the wrap around open deck area making it ready to host large summer cookouts or quiet fall evenings. The open kitchen and living room with vaulted ceiling allow plenty of space and great views in three directions.

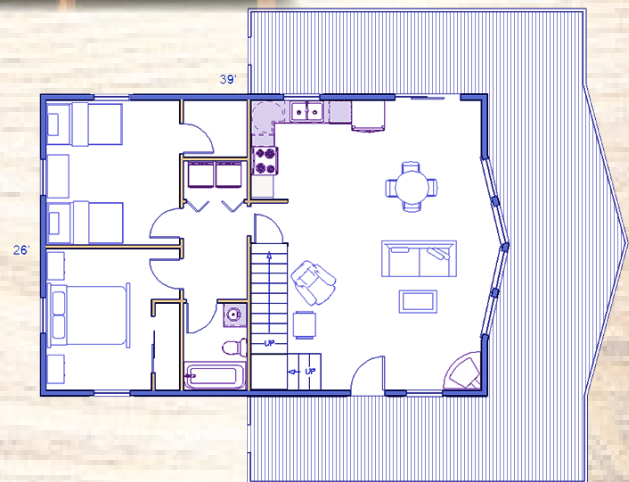
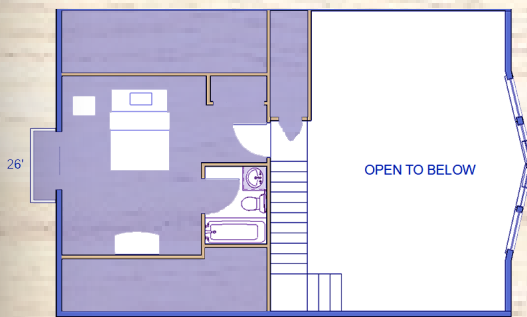


ALPINE RIDGE

1,498 Sq. Ft.
3 Bedrooms
2 Bathrooms



This 26' x 39' log cabin has an impressive prow front window, maximizing views of the great outdoors. Features such as tremendous vaulted ceilings, convenient kitchen, and plenty of space to entertain make this cabin home. This roomy cabin is perfect for the growing, active family to enjoy year after year.



Images of products are for illustrative purposes only.

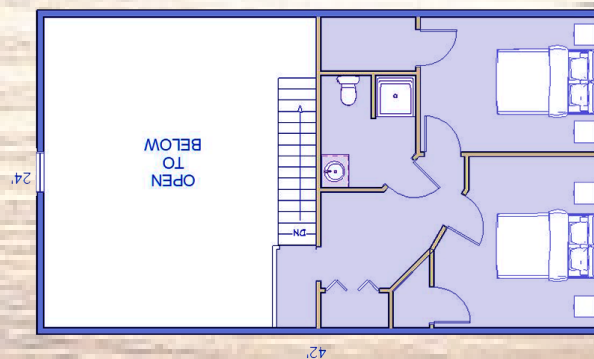
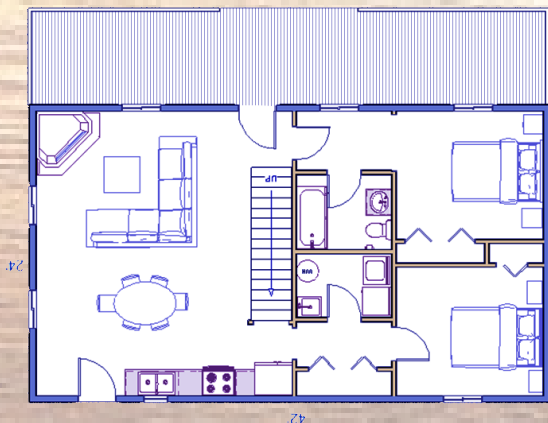


1,512 Sq. Ft.
4 Bedrooms
2 Bathrooms

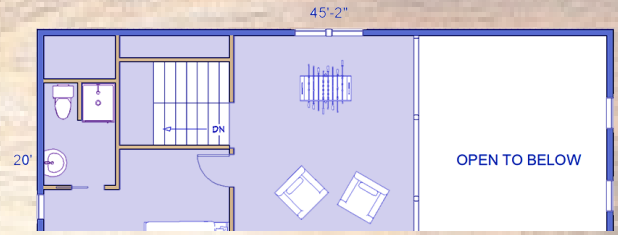
SEQUOIA



This 24' x 42' log cabin offers two full bathrooms, four bedrooms, and a spacious kitchen. Plenty of room to relax inside on snow days or drink hot cocoa on the generous covered porch. The Sequoia offers plenty of space for those times when family and friends want to make memories together.



1,900 Sq. Ft.
3 Bedrooms
2.5 Bathrooms



This spacious home brings all of the charm of an old world cottage with its cathedral ceilings and multi-purpose loft. You will feel like this is an escape from the hustle and bustle of your daily life. It is our largest and most versatile cottage style log home including 3 total bedrooms with a master suite and private bath located on the first floor. For your convenience an additional 1.5 baths included. Enjoy a functional eat-in-kitchen opening to a spacious great room. Enjoy an outdoor lifestyle on your front and rear porches. Increase your home's usefulness by adding the optional attached garage. Take your cabin experience to the next level with this unique cottage design.

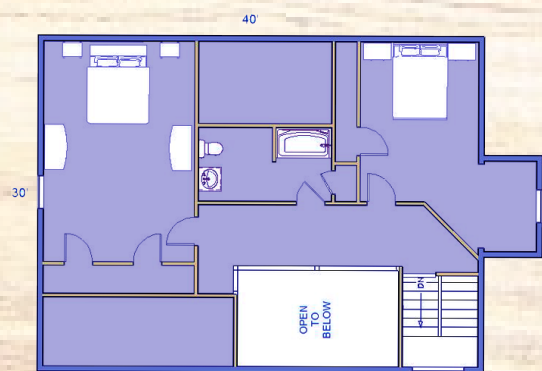


Images of products are for illustrative purposes only.

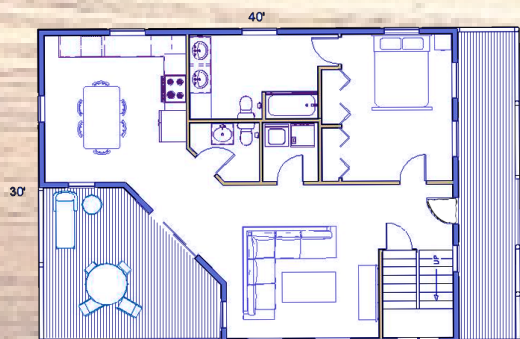
MCKINLEY

HAMPTON

2,119 Sq. Ft.
3 Bedrooms
2.5 Bathrooms



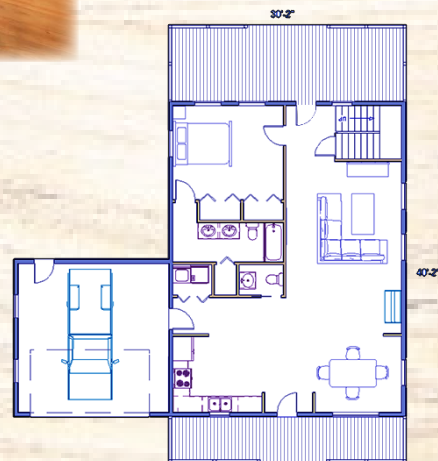
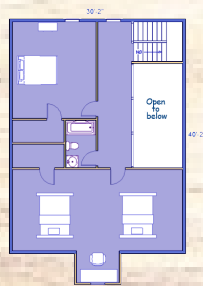
If style, coupled with efficiency is what you require, the Hampton is a home with lots of appeal. Numerous architectural lines, sloping roofs, and multiple porches create an impressive and inviting exterior. The interior is just as remarkable with three bedrooms, two-and-a-half baths, an eat-in kitchen, and the potential for a full basement.



2,200 Sq. Ft.
3 Bedrooms
2.5 Bathrooms



This 30' x 40' log home's large, open floor plan features a first floor master, large living room, dining area and open, inviting kitchen to prep holiday meals. The second floor has a large loft for added sleeping or living space and a private second bedroom. There is plenty of storage space for the thriving family.

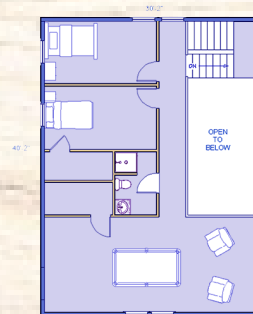


KILLINGTON



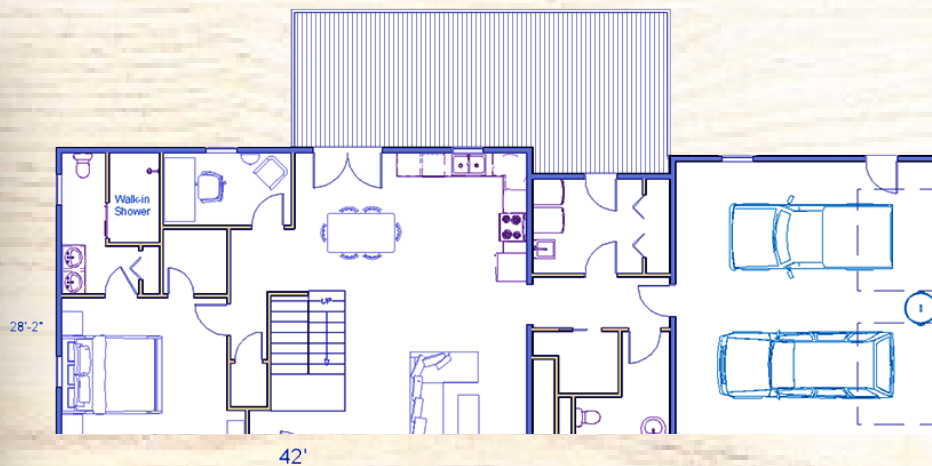
2,200 Sq. Ft.
3 Bedrooms
2.5 Bathrooms

This is the newest open floor plan offered by Conestoga. Unwind under the cathedral ceiling in the two-story living room. Host gatherings in the large dining room and then retire to the master suite. Two more bedrooms and an additional bath are located upstairs with a loft that can be a quiet study or an entertainment room.

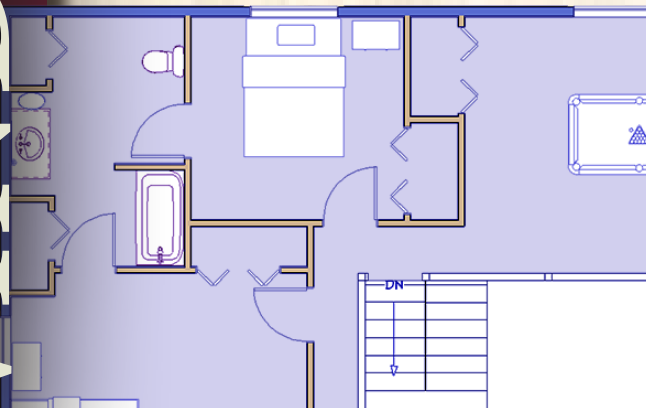


TIMBER RIDGE

2,312 Sq. Ft.
3 Bedrooms
2.5 Bathrooms



This log home offers a first floor master suite, den, great room, and a huge kitchen plus amenities; including laundry, pantry, and an optional two-car garage. A winding staircase goes to the second floor featuring two bedrooms, a bathroom and a space for a kids' playroom or office.



WINDSOR

CUSTOM HOMES

Contact us for other home designs that are available or to discuss a custom floor plan that meets your specific family needs.

BUILD IT!

Designed To Fit Your Budget



DREAM IT

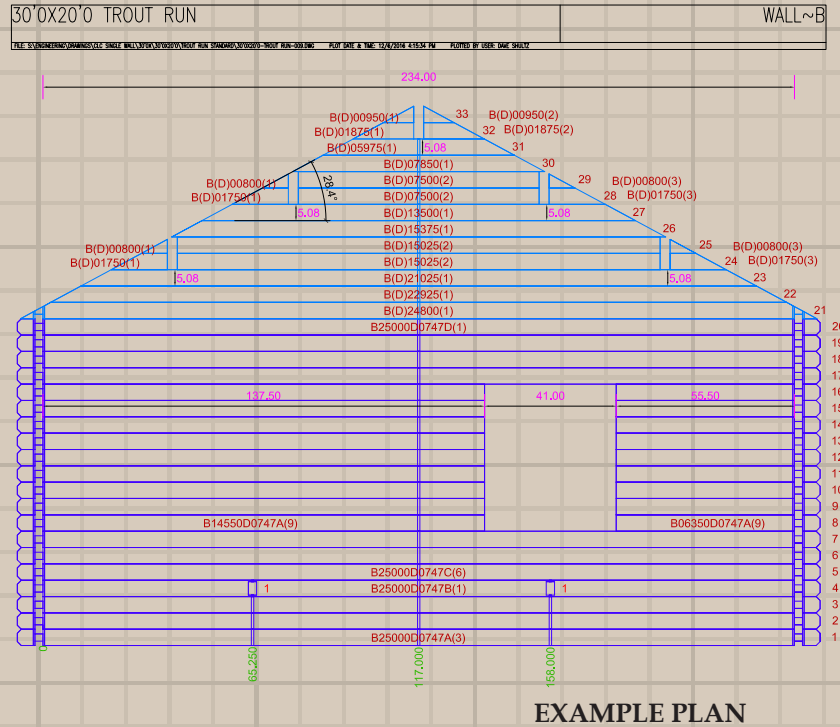

Conestoga
LOG CABINS & HOMES

ConestogaLogHome.com

Assembly

We make it easy for home owners or builders without log home construction experience to build our log homes. Every log has a label attached with a unique number that corresponds to plan drawings. This unique number enables you to know the exact location of every log during the construction process.

The numbering system not only ensures organization and easy identification, but facilitates technical support if needed. If a question arises during construction our technical support team is available to provide assistance. By providing the log number our technicians will know exactly what you're working on and how to better assist you.



Need help with your log home assembly kit?

In case a question arises, Conestoga's knowledgeable staff is available for assistance. Conestoga is committed to providing customers with quality support, materials and supplies.

Service

Whether you're an individual or an organization, Conestoga has experienced construction teams available to assemble our structures within the United States and abroad.

With a Conestoga team you can be assured you have the skill and expertise of trained craftsmen. Conestoga's teams provide a knowledge level that ensures an efficient and quality installation at a competitive price.

For most individuals and organizations, time seems to be in demand. Gaining more of this resource is a logical reason for hiring a Conestoga team. Experience peace of mind in knowing your newest investment has been installed with the highest level of workmanship provided by a Conestoga construction team.



- **Competitive Pricing**
- **Efficient**
- **Trained Personnel Ensure Quality**
- **Satisfaction Guaranteed**

F. A. Q.

What is the average cost per square foot for both cabins and homes?

For cabins under 800 SQF, the kit price would be around \$60/SQF. A larger home would be around \$80/SQF. A rough estimate for a turnkey cabin would be double the kit price. This includes excavation, foundation, utilities, and more so that the log home is ready to move in. The price would be more for longer driveways, cabins built on a hill, upgrades, etc. More information can be found at: <http://conestogalogcabins.com/log-cabins-kit-turn-key-cost/>.

Do your logs come from renewable forest practices?

Yes, all our logs come from Forest Stewardship Council (FSC) certified vendors. The engineered logs originate from trees from planted forests and have a much smaller carbon footprint than other log systems.

What is an average time for delivery from the time of a purchase order?

While this can vary based on size of the cabin, time of year ordered, and customization, the time from signoff of building plans to shipping is about 60 days. The time from order placed to signoff of building plans can be days for a standard cabin to months for larger complex homes that require numerous customer requested revisions.

How long does it take to assemble?

The size of the building and the number of people assembling has a significant impact. Cabins under 800 SQF with a crew of three people should take about three weeks to assemble a basic cabin. Additional time should be added for foundation, running utilities, obtaining construction permits and staining. With larger log homes, with full insulation and finishing, the time would be a few months. We have a crew that can assemble the kit worldwide and would work with your local general contractor. We also have in-house technical support for those that self-build. Here is a link to assembly videos: <http://conestogalogcabins.com/category/assembly-videos/>.

How often is it recommended to re-caulk between the logs?

Because of our engineered logs, there is no need to caulk between the logs. Caulk is used where the logs cross, such as the corners of the cabin. It is recommended to re-stain every five years, which is when the caulk should be inspected and re-caulked as needed.

What are the different grades of insulation used?

We use both fiberglass and Polyiso board. The fiberglass can be R-19 to R-38 and is typically used in floors and ceilings. If wall insulation is needed, one or two layers of Polyiso board is installed. Our typical four season log home has one layer of wall insulation equal to R-16. We have log homes in Alaska and many other cold climates and can always meet the local energy code requirements.

Is there a choice of roofs and if so, what are the different types?

We use both shingles and metal in all colors. Our metal roof has a 45 year warranty and shingles have 25-35 year warranty.

What type of foundation is recommended?

Our log buildings have been built on many different types of foundations. Typical foundations are slabs, crawl spaces, piers or full basements.

What is the warranty on the material used?

The entire cabin has a one year warranty. Specific materials have longer warranties, such as the roof for 25-45 years and windows for 20 years. The logs are warrantied against splitting for life.

Is there a warranty on the assembly and construction?

A typical construction warranty of one year on the entire cabin is provided. Technical support is also provided free of charge.

Is there a strong sound barrier from the exterior?

Wood naturally absorbs sound, which is why it is used along highways for sound barrier walls. All log cabins provide significantly better sound protection than traditional building systems. Because of less movement and the tight seal of our Everlast logs, our cabins are an excellent sound barrier.

Does extreme humidity or cold affect the logs and the caulking?

We have cabins in tropical climates and the cold region of Alaska as well as in all 50 states and 7 countries. Wood grows naturally in all climates. The specific species of wood we use has proven to withstand all climates. We can also meet any snow load or wind load building requirements. One of our customers told us, "The town and neighboring communities where our cabin is located was declared a national disaster area from Hurricane Irene. Our cabin suffered NO damage and is a solid Conestoga log cabin."

