



**Sq. Ft.**      **2,119**

**Bedrooms**    **3**

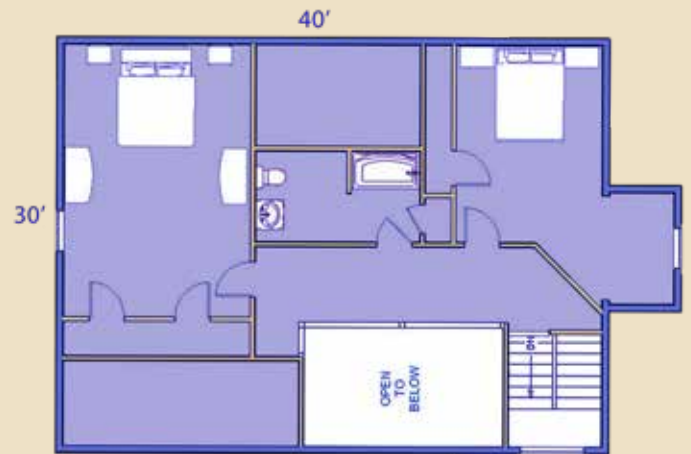
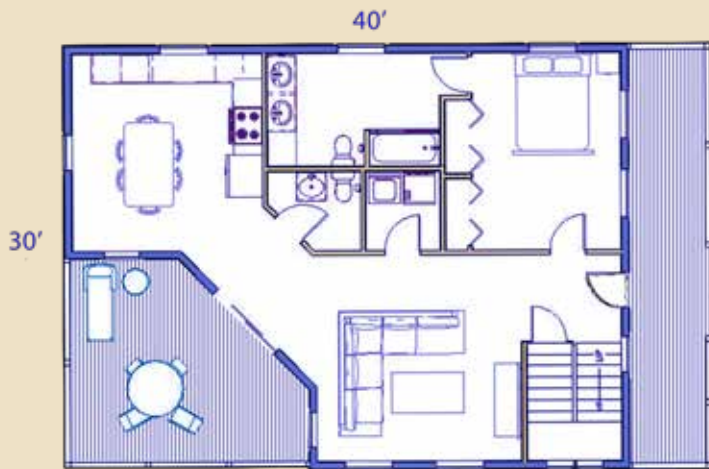
**Bathrooms**   **2.5**

If style coupled with efficiency is what you require, the Hampton is a home with lots of appeal. Numerous architectural lines, sloping roofs, and multiple porches create an impressive and inviting exterior. The interior is just as remarkable with three bedrooms, two-and-a-half baths, an eat-in kitchen, and the potential for a full basement.

Images of products are for illustrative purposes only.

Conestoga Log Cabins is America's leading provider of log cabin kits. Conestoga was built on the proposition of making log cabin dreams attainable for everyone. Conestoga has cabins in all 50 states and internationally.

# Floor Plans



30' x 40'

