

8'x4' Shedarick™ Garden Shed Assembly Manual

November 2019

Thank you for purchasing an 8x4 Shedarick™ Garden Shed. Please take the time to identify all the parts prior to assembly.

Please be aware that it is the customers' sole responsibility to acquire the necessary building permits and or obtain approval from their local county, municipality or HOA prior to purchasing. Generally, shed structures under 100 square feet do not require permits in most jurisdictions in the United States and Canada.



In the event of a missing or broken piece, simply call the Conestoga Log Cabins & Homes Customer Support Line at 717-306-4490 within 30 days of the delivery of your purchase. It is our commitment to you to courier replacement parts, free of charge, within 10 business days of this notification. Replacement parts will not be provided free of charge after the 30 day grace period.

8x4 SHEDARICK HARDWARE PACKAGE

Hardware Kit (Provided)

2 1/2"  100 Pcs.


1 1/4"  60 Pcs.

2"  38 Pcs. w/hinges
Black Headed

3/4"  24 Pcs.
Black Headed

1 1/2"  245 Pcs.
Finishing Nail

 Square Drive Bit

 Star Drive Bit



Tee Hinge x 6



Door Handle x 2



Lock Bolt



Cane Bolt

Tools Required (Not Provided)



Hammer



Screw Gun/Drill



Tape Measure



Wood Clamp



Utility Knife



Level



Pliers



Ladder



1/8" & 1/2" Drill Bits

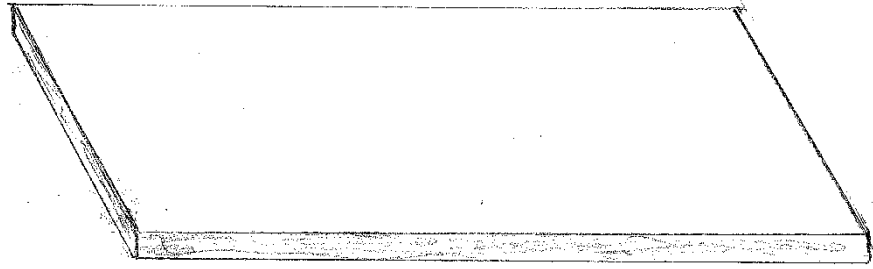
Safety Equipment Required (Not Provided)



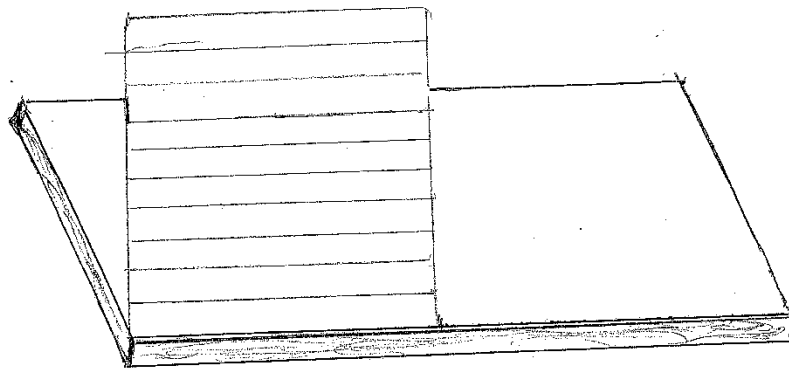
Safety Glasses



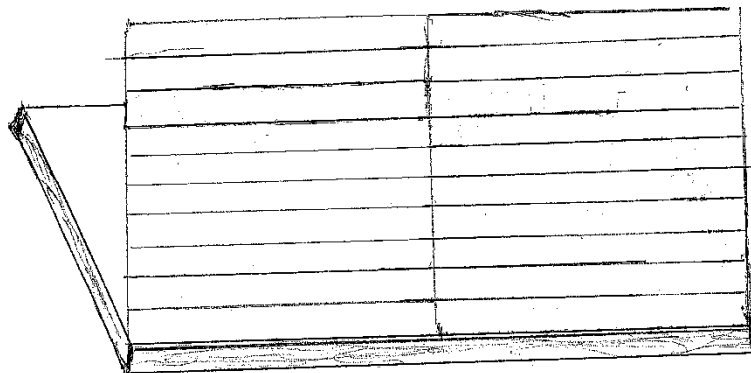
Work Gloves



Base Platform

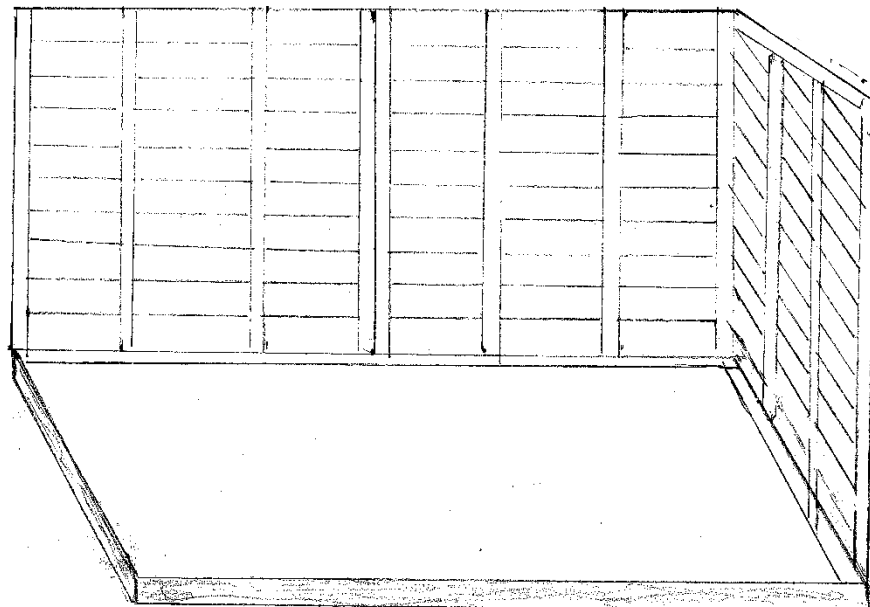


Starting with the small back panels, flush up the side and the back panel with the platform. Secure with 6 – 2 ½ inch deck screws, one (1) on either side of studs.



Take second panel and do the same, making sure panels are tight together. Line up your top edges so they are flush with each other. Secure with 8 – 2 1/2 deck screws, 4 on either side.

INSIDE BACK WALL

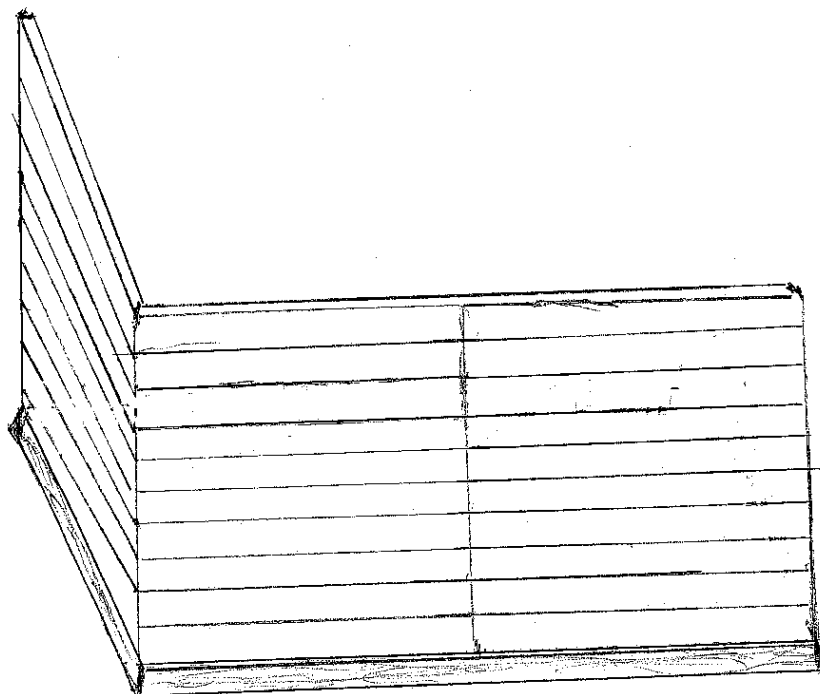


RIGHT
SIDE
WALL

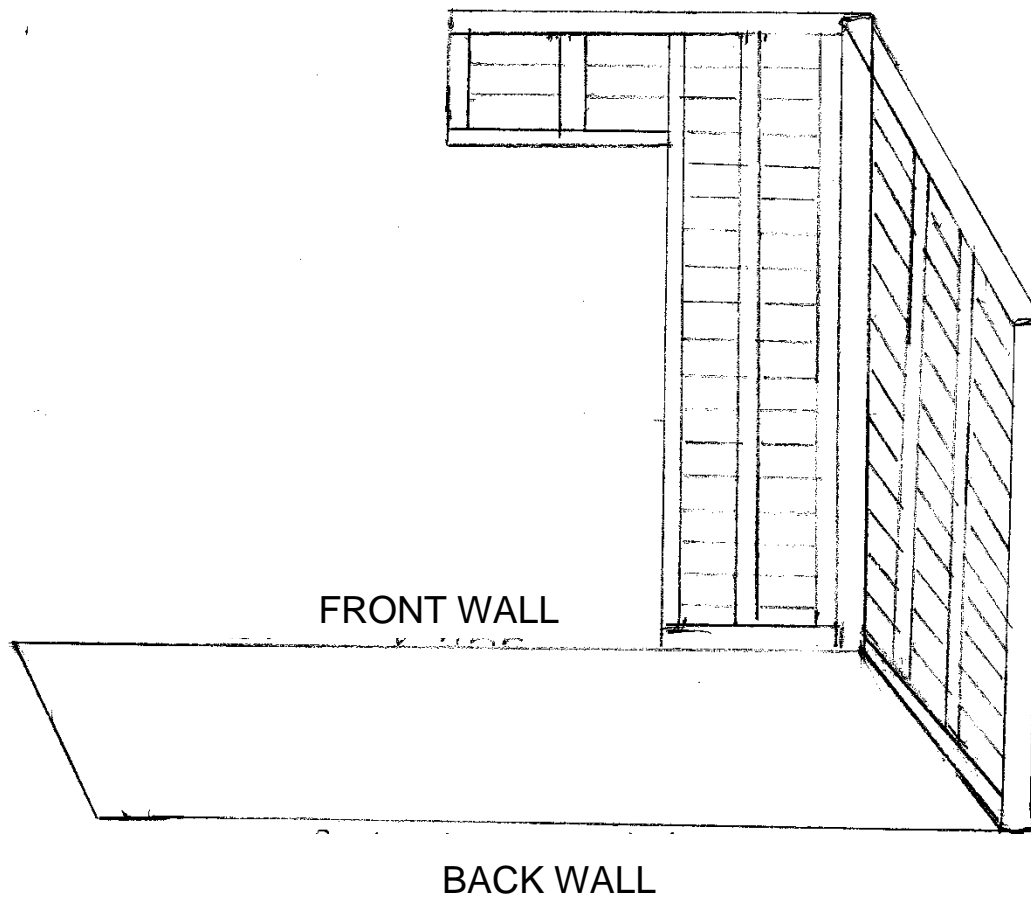
FRONT

Take one (1) side panel and flush it up with your back panel and platform. Secure to floor with 6 – 2 1/2-inch deck screws. Flush up the tops of back panel and side panel and secure with 8 – 2 ½ inch deck screws. Do the same on opposite side.

LEFT
SIDE
WALL

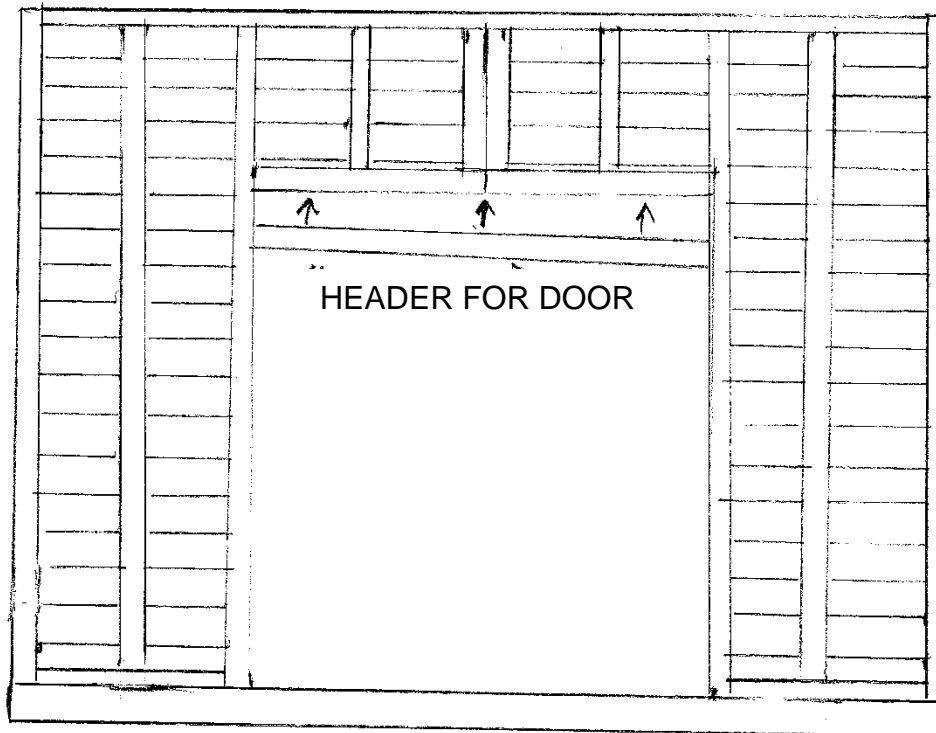


BACK



Attach front wall to floor, making sure panel is flush with platform and tight against side panel. Secure with 4 – 2 ½ inch deck screws. Making sure the tops of side wall and front wall are even. Secure together using 12 – 2 ½ inch deck screws. Do the same on opposite side.

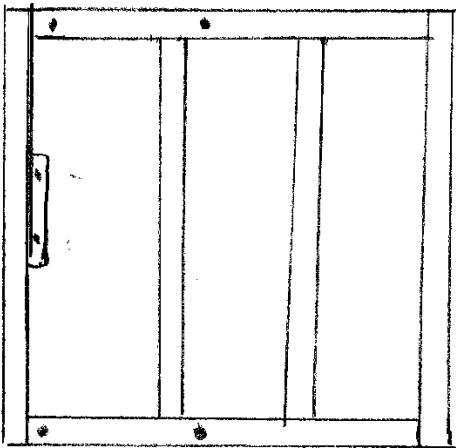
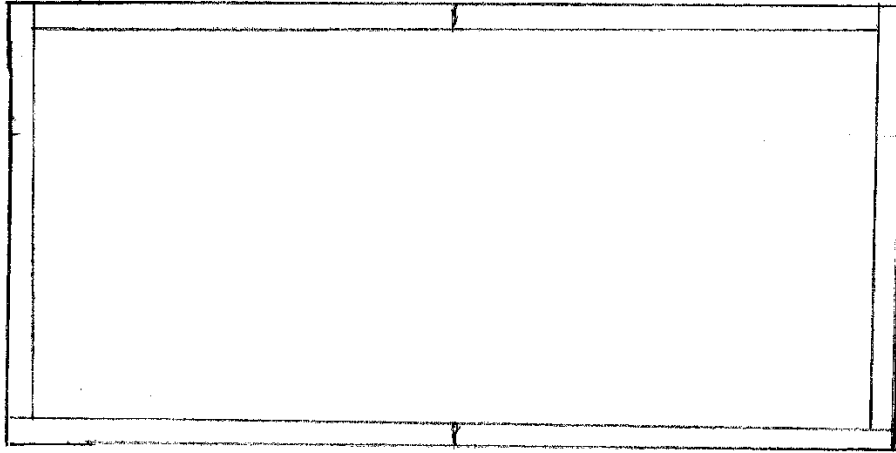
INSIDE FRONT WALLS



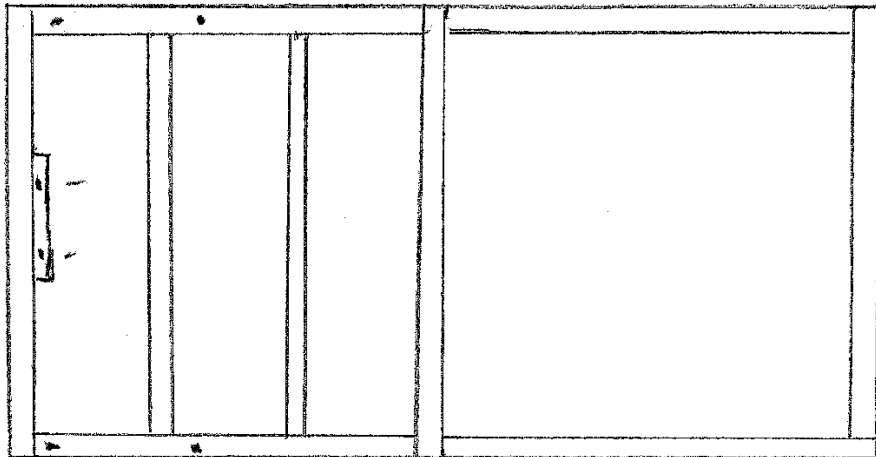
After both sides of front panels are secure, flush up middle section and secure with 4 – 2 ½ inch deck screws. Then take door header and mount to doorway opening. Secure with 8 – 2 ½ inch deck screws.

Attaching the Roof Joist

Top View

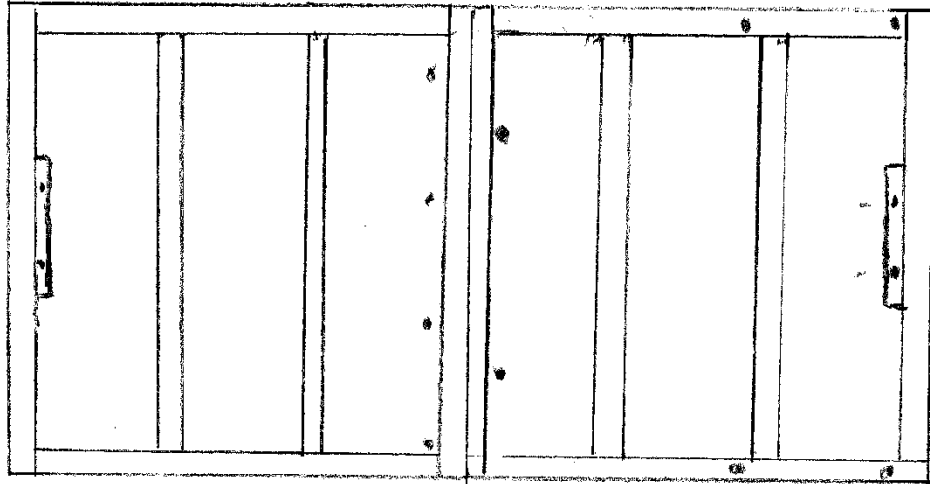


Line up roof joist panel with the top, bottom and side. Secure with 6 2 ½ inch screws as shown.



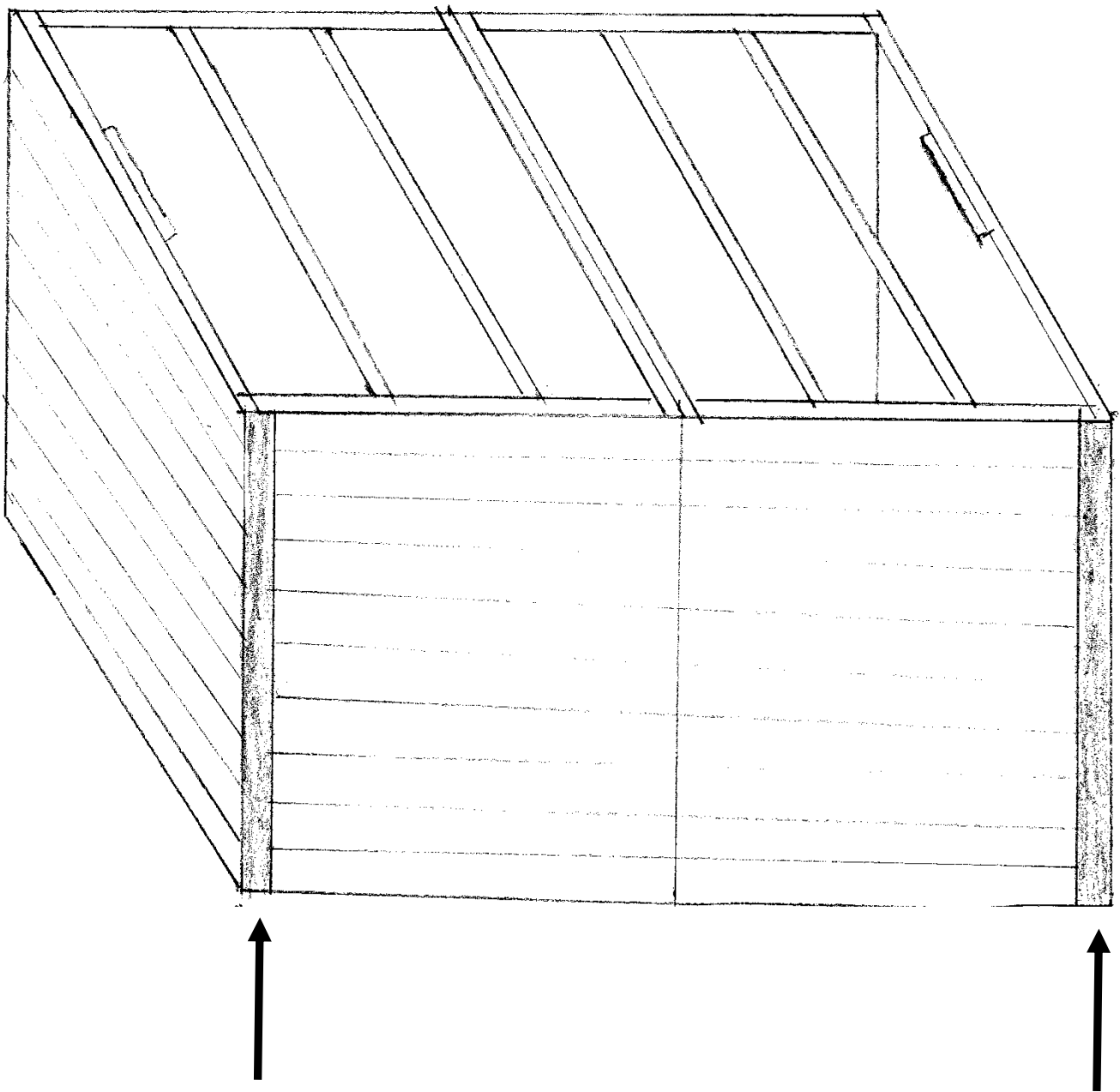
Attaching the Roof Joist

Top View



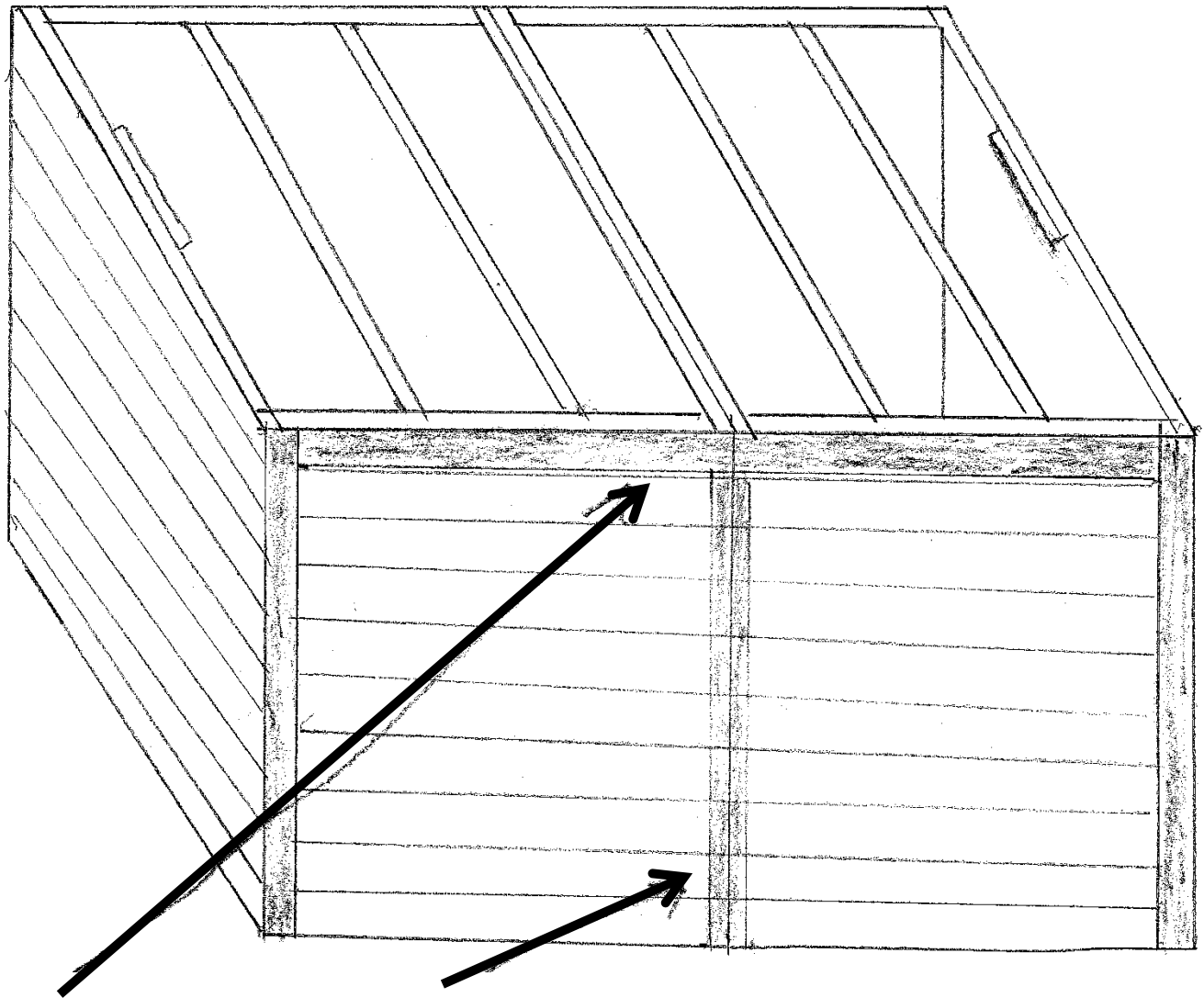
Placing the second roof joist, secure with 6 2 ½ inch deck screws. Lining up the middle sections, making sure they are flush with each other, secure together with 6 2 ½ inch deck screws. Finish securing the outer edges of roof joist using 8 – 2 ½ inch deck screws.

Attaching the Trim



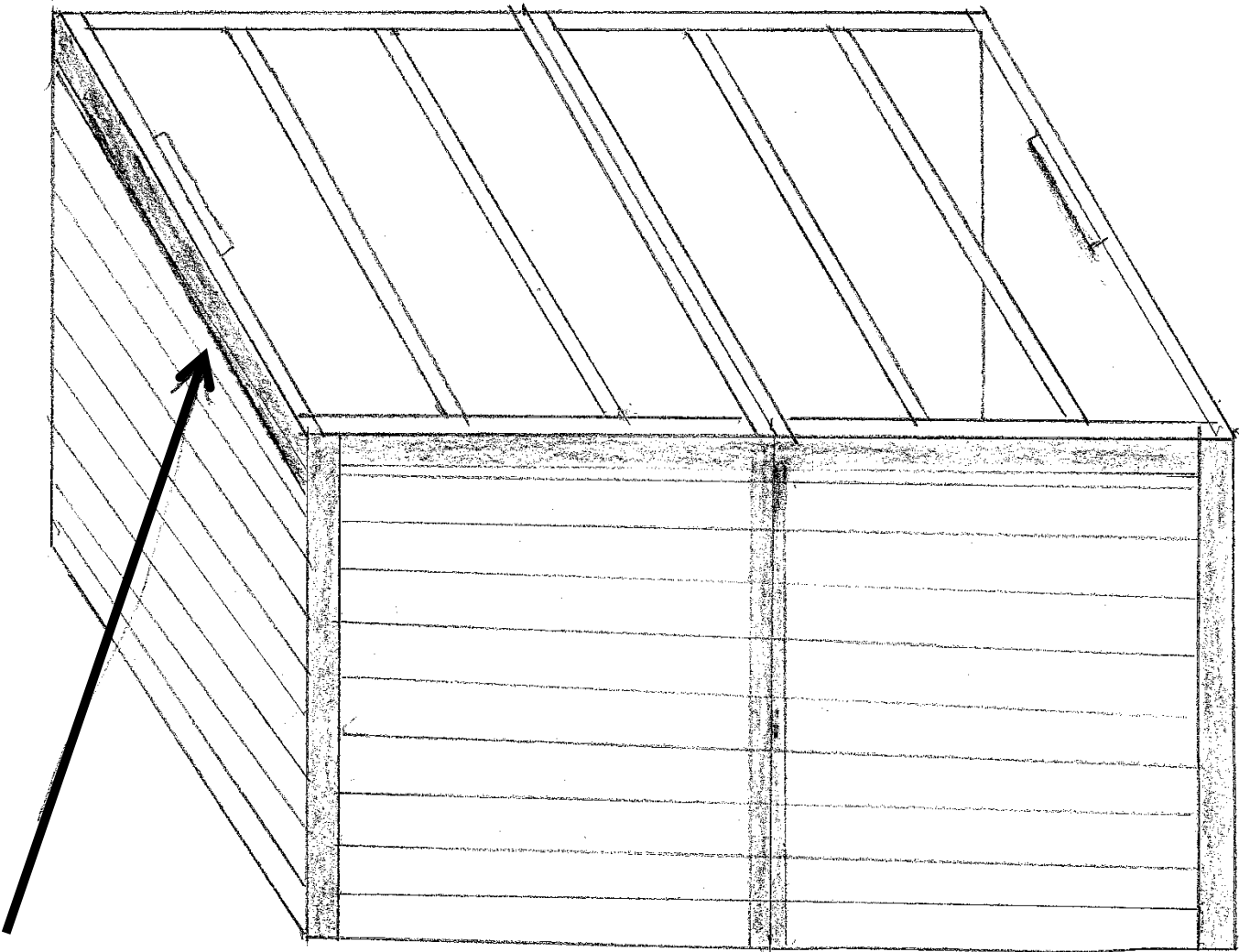
Use the first 2 pieces of trim to attach to back wall. 1 x 3

Attaching the Trim



Third piece of trim across the top. Fourth piece down the center. 1 x 3

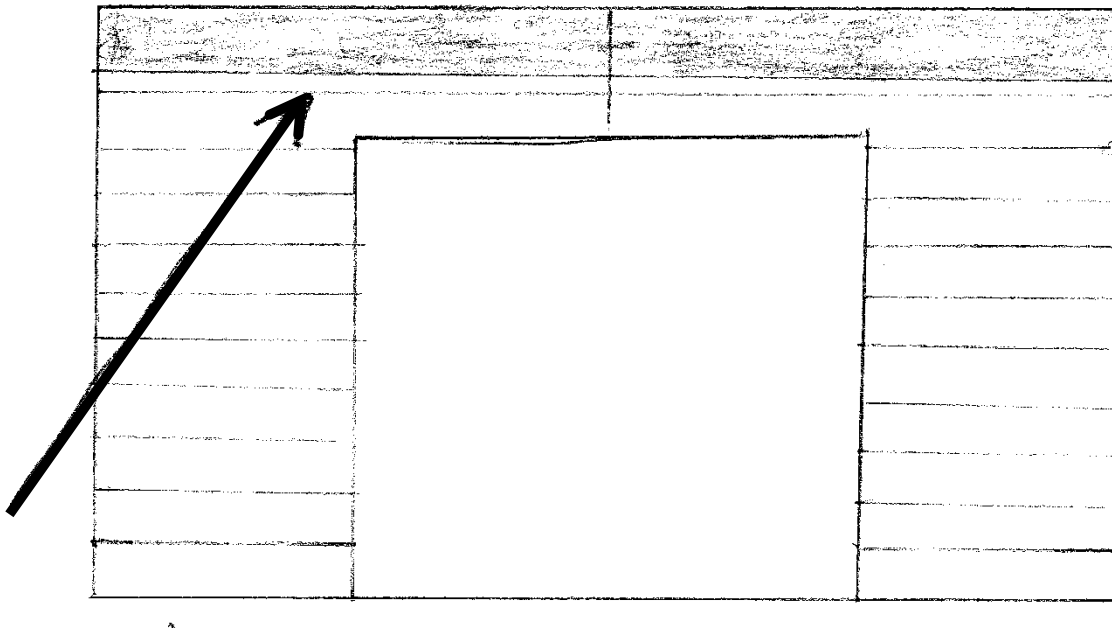
Attaching the Trim



Fifth and sixth pieces of trim go from edge of back trim to front edge of shed. Same for the other side.

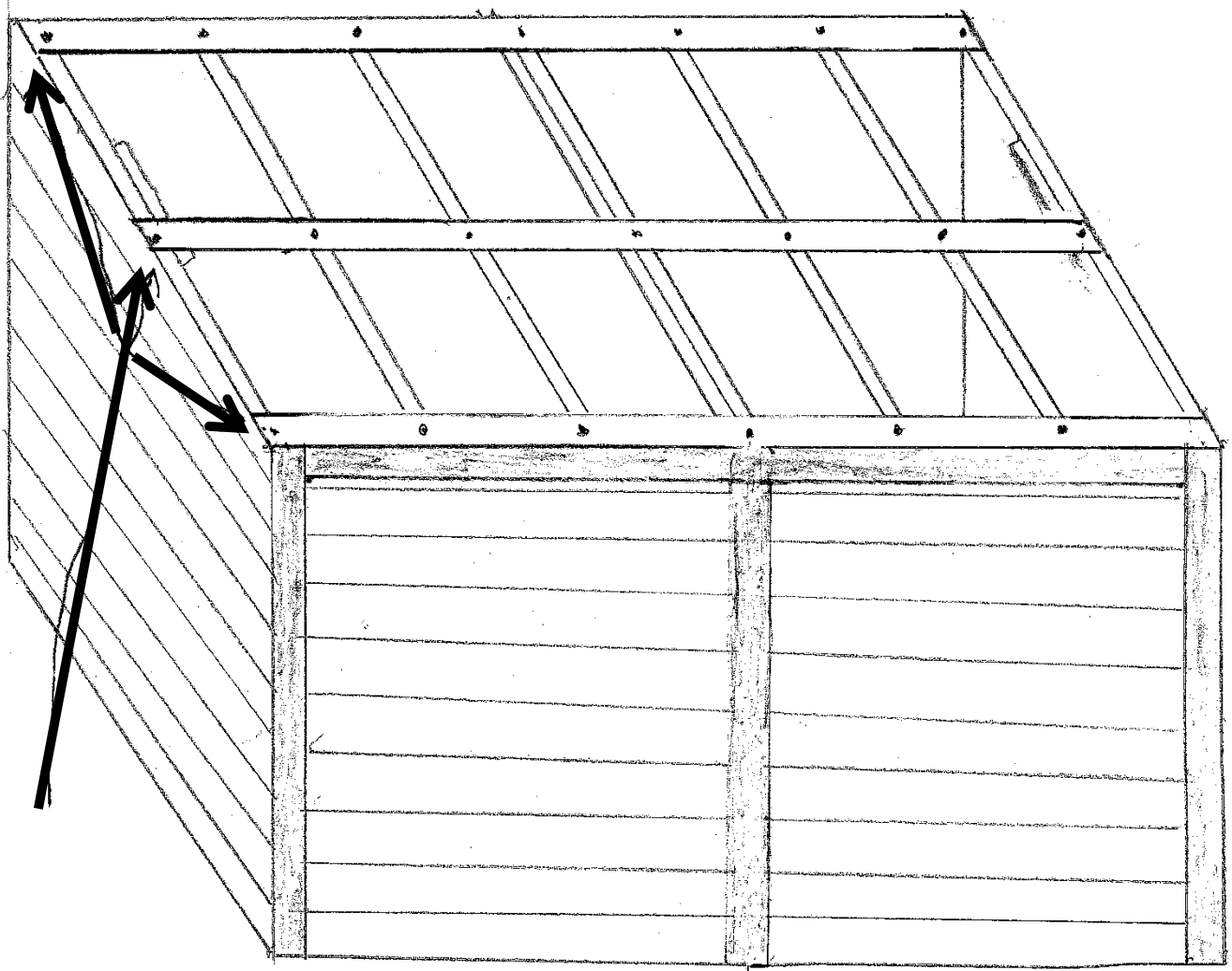
1 x 6

Attaching the Trim

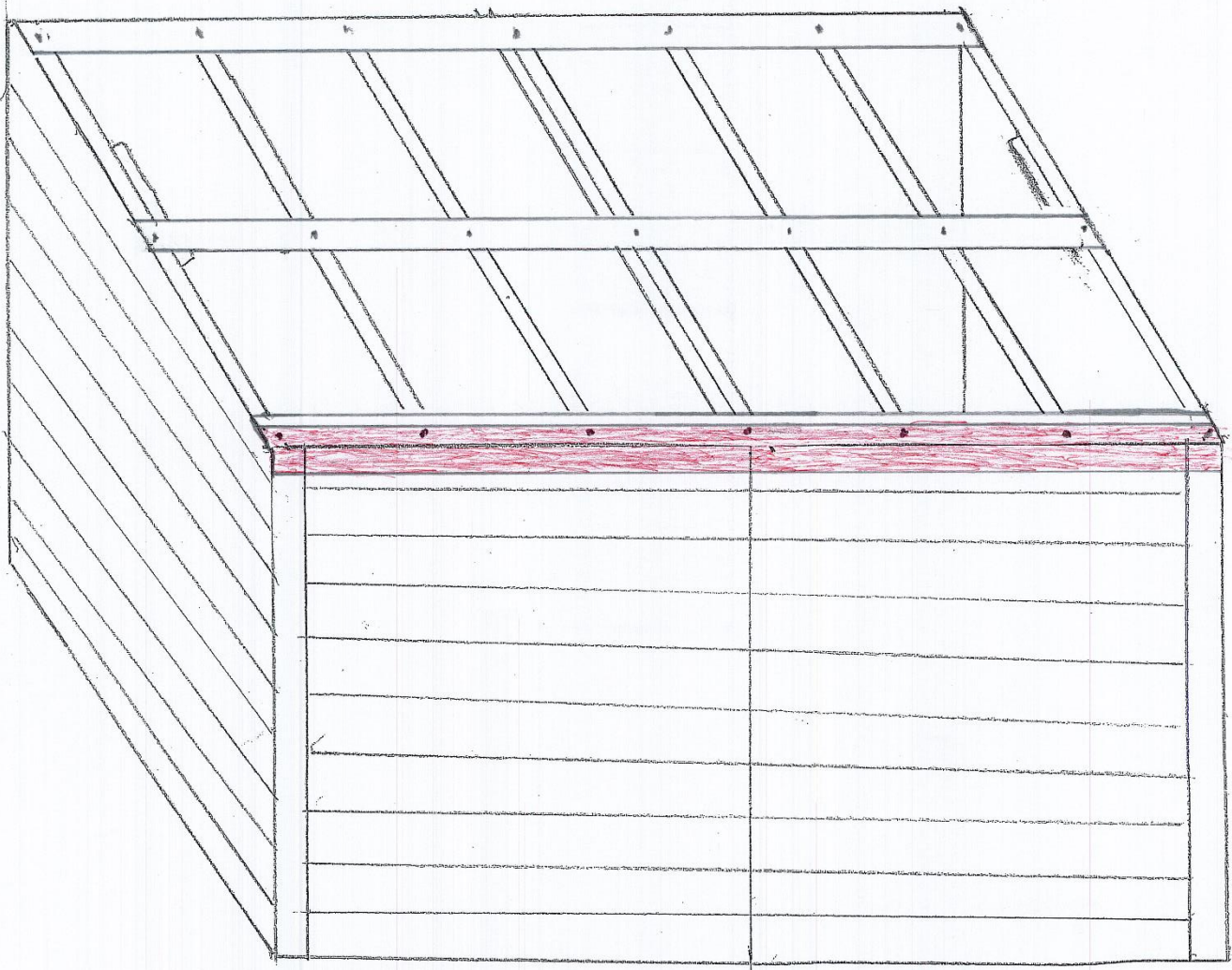


1 x 6

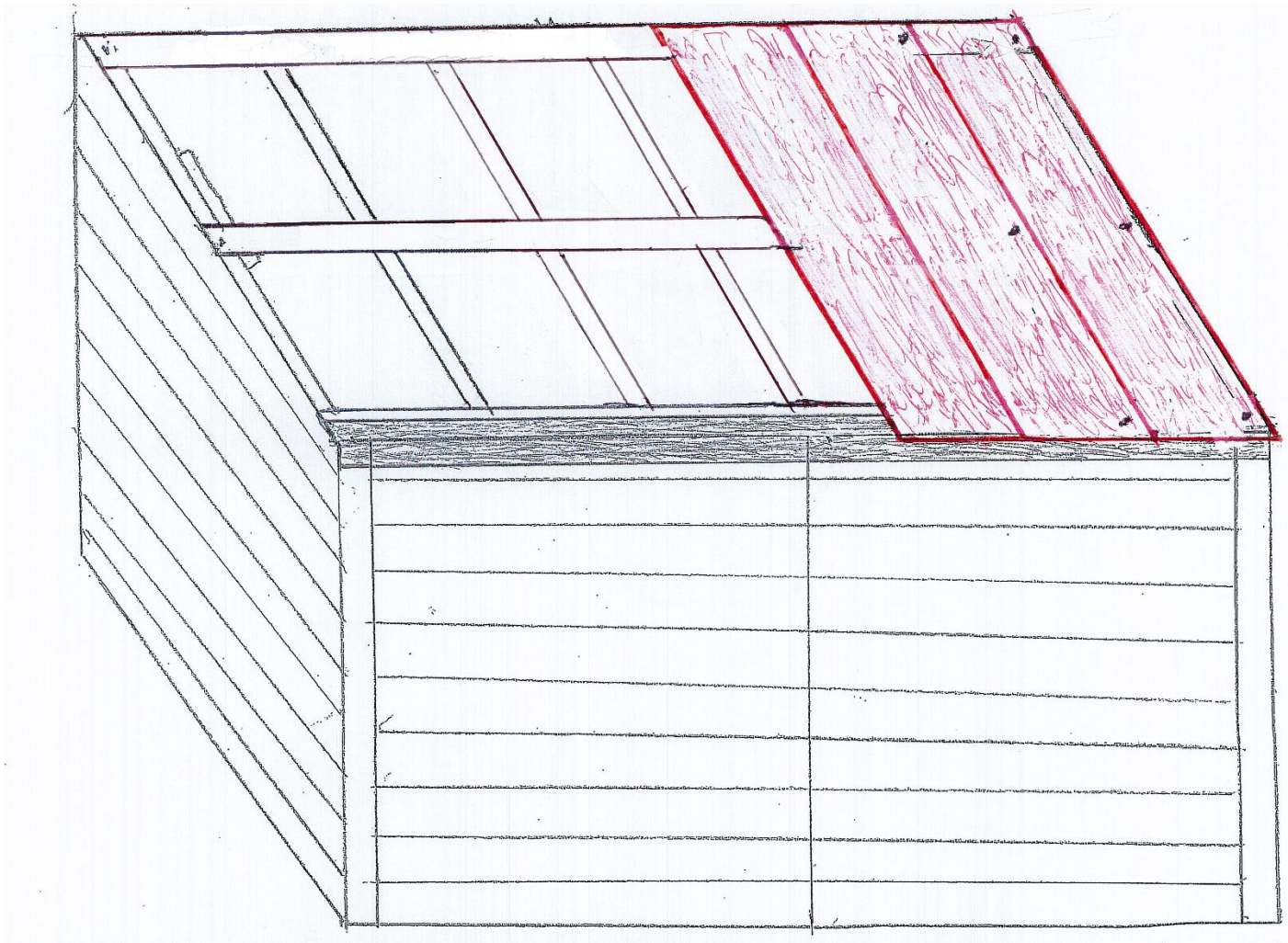
Seventh piece of trim goes from edge to edge on top. Leave door trim until after door is in place. All corners can be trimmed out and finished.



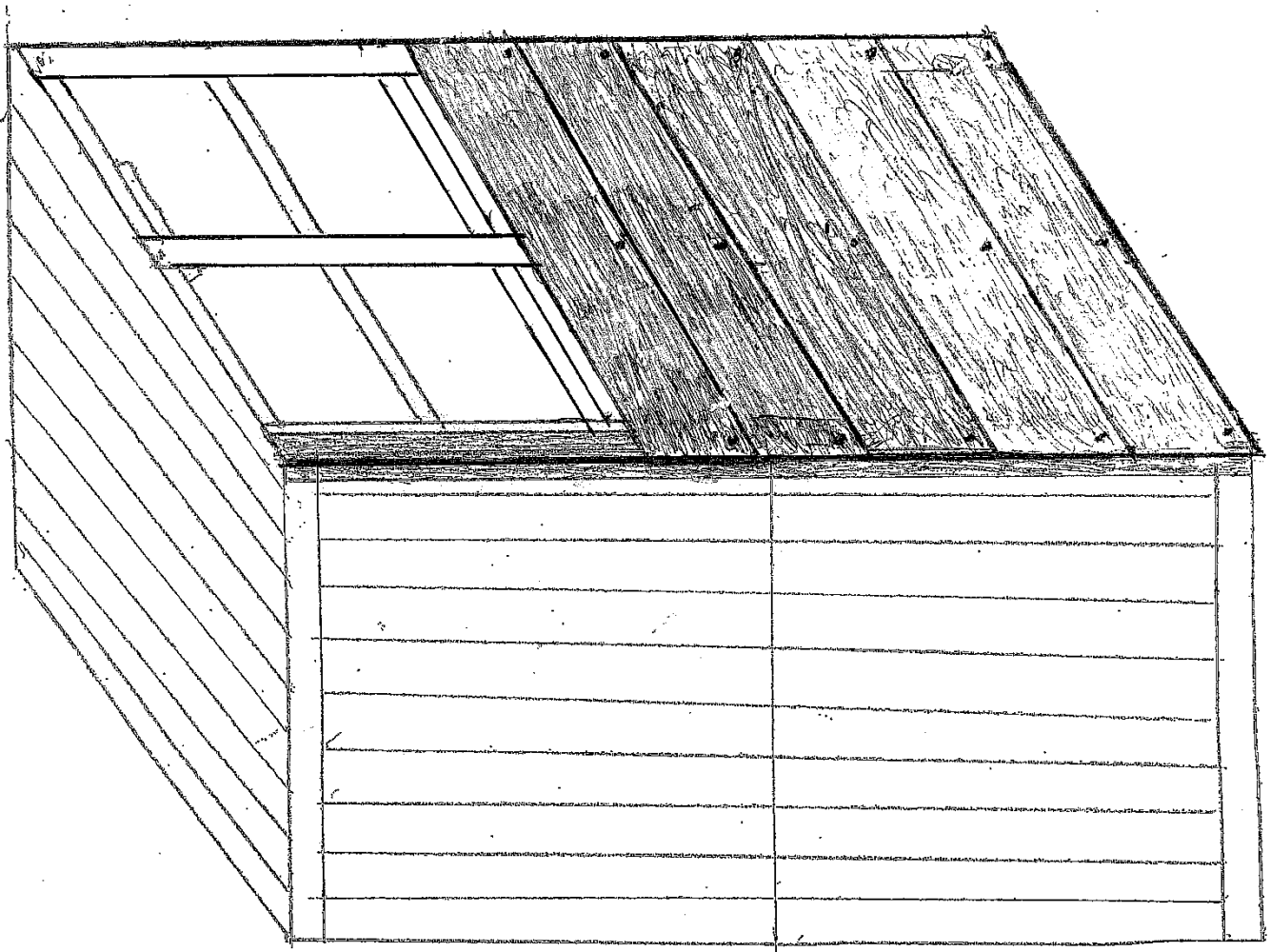
Attach the 3 1x3 strips on bottom edge, top edge and middle using 7 – 1 ¼ drywall screws in each board.



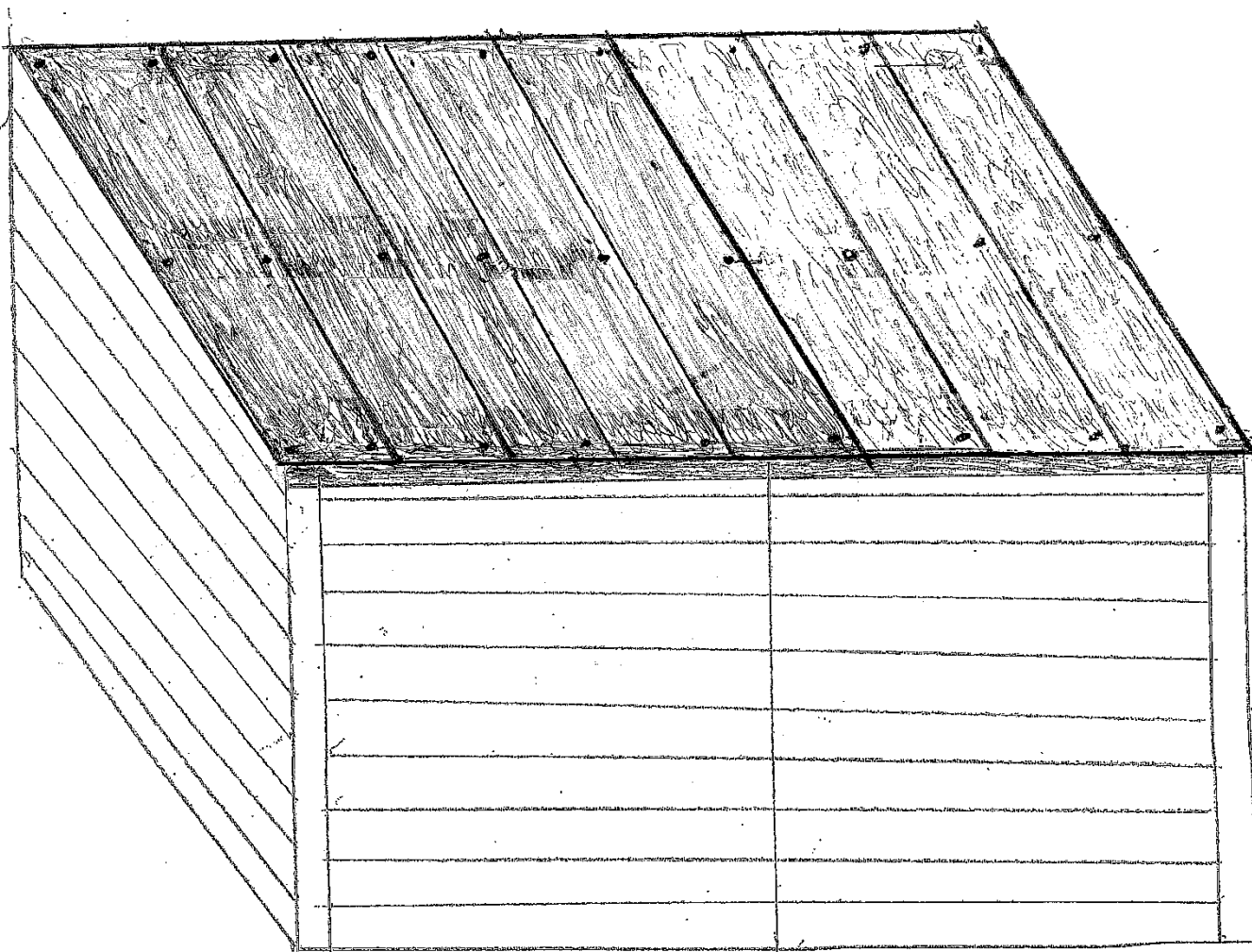
Attach corner metal trim on back wall using 7 – 1 ¼ roofing nails on roof area.



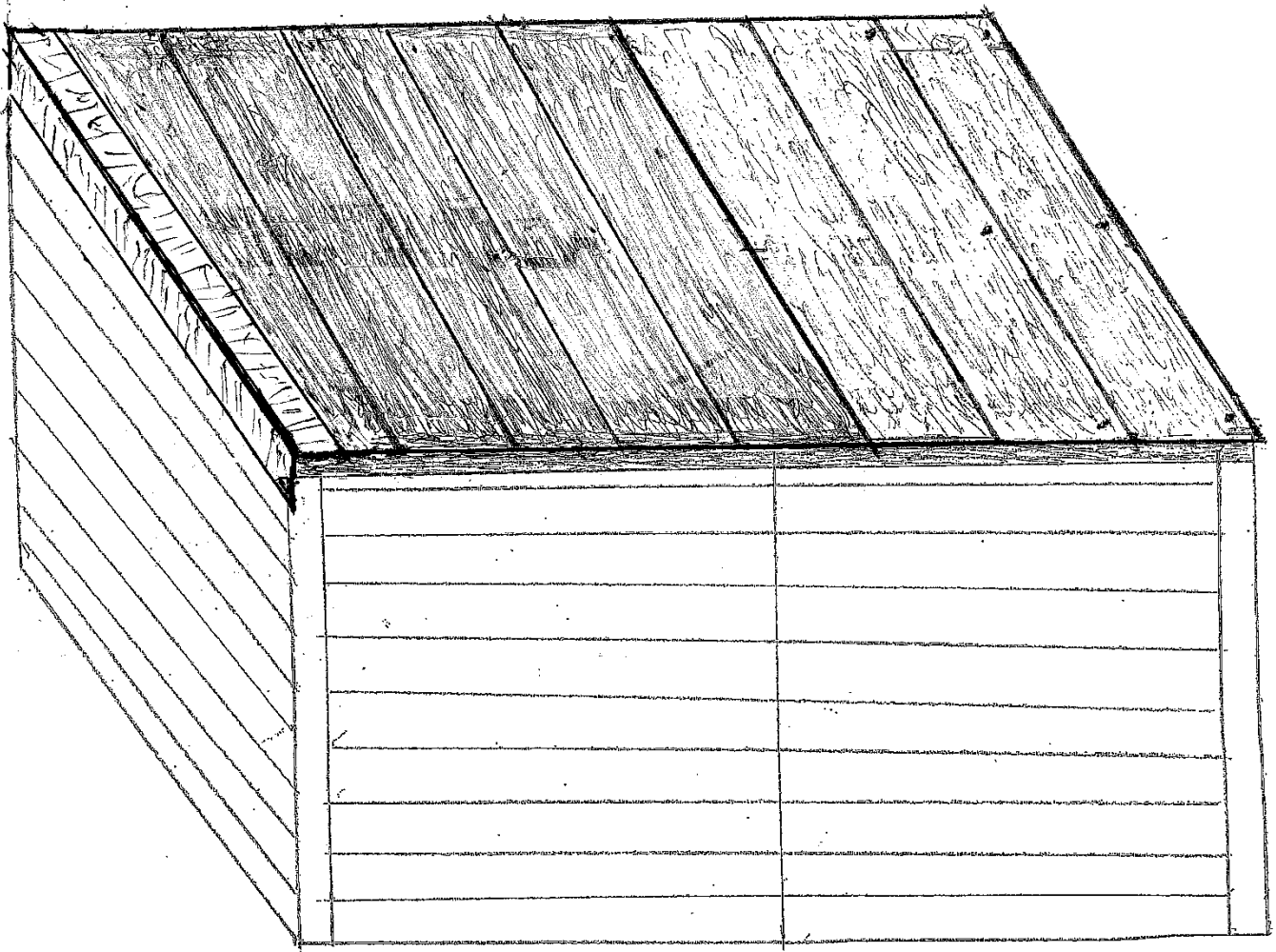
Starting on the back right side, place first metal roof piece roughly $\frac{5}{8}$ of an inch over side. Bottom should be 1 inch past the shed wall. Use 6 – 1-inch metal roof screws to hold in place.



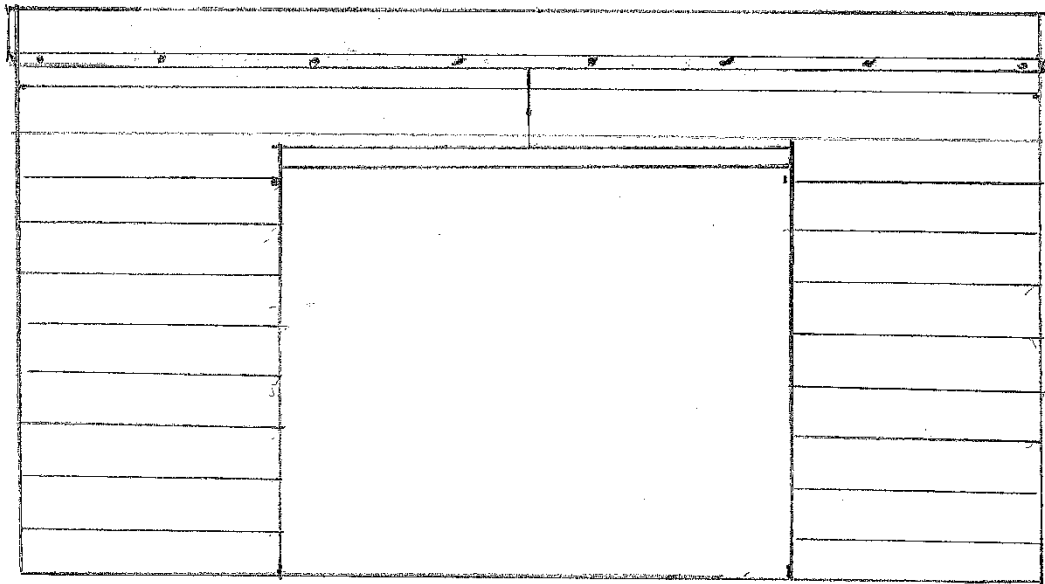
The second roof sheet overlaps 2 seams making sure the bottom edges are even at 1-inch overhang. Secure with 9 – 1-inch metal roof screws.



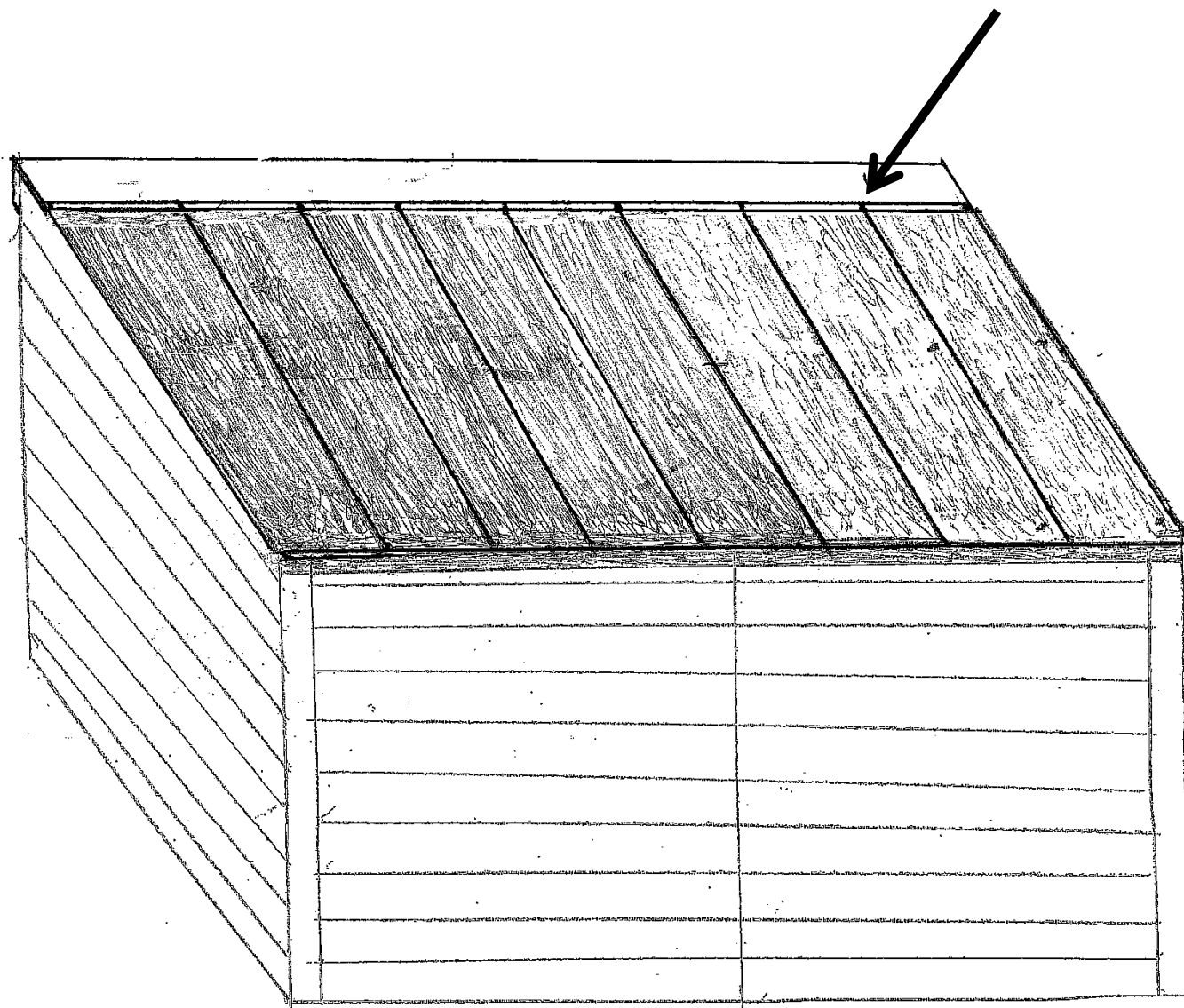
The third and last roof sheet should fit with roughly $\frac{5}{8}$ to $\frac{3}{4}$ inch overhang on side with a 1-inch overhang on the bottom. Secure with 12 – 1-inch metal roof screws.



Using the wide metal trim, making sure the bottom is even with the metal roof, secure the bottom of the trim with 1 – 1-inch metal roof screw. Go to the top and square up piece by eye and then secure with the remaining 5 – 1-inch metal roof screws with 3 on top and 3 on side. The other side is the same way.

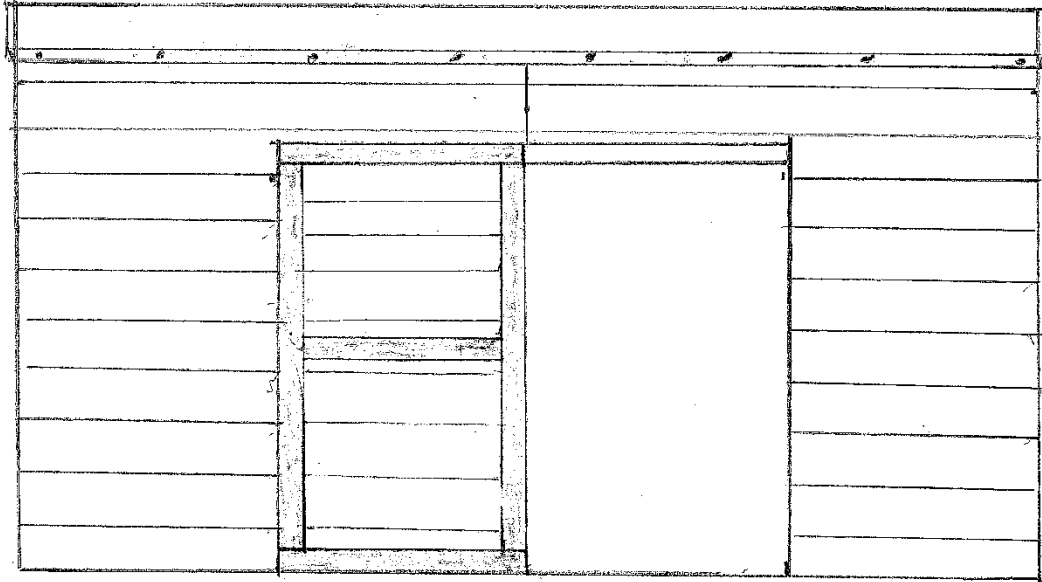


Attaching the front piece of metal trim to the front side of shed, use 8 – 1-inch metal roof screws to secure piece to shed, keeping trim even across the front.



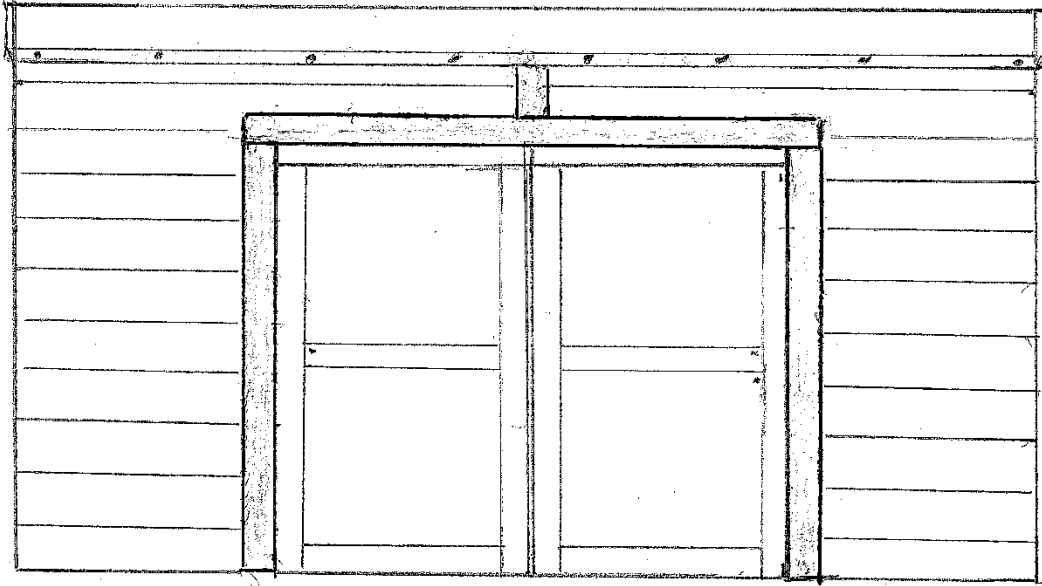
Making sure trim is even across the roof line, secure trim with at least 7 – 2-inch metal roof screws by screwing through the high ribs of the metal roof panels as shown.

Attaching Door to Jamb



Place door against one side of jamb, making sure you have a $\frac{1}{4}$ inch clearance on the bottom. Secure with the black screws that come with hinges. Do the exact same thing on other side. Attach door hardware to doors.

Attaching the Remaining 4 Pieces of Trim



Secure trim to outside of door. Do the same to opposite side. After outside trim is attached, take top piece for across doorway and attach. The last piece of trim goes in the center above the door.

Your shed should now be complete!

**Congratulations on completing
your 8' x 4' Shedarick™ Shed!**

Note: Our sheds are shipped as unfinished products. If exposed to the elements, they will weather to a silvery-gray color. If you prefer to keep the wood looking closer to the original color, we suggest that you treat the wood with a good wood stain. You may also wish to paint your new shed rather than stain it. In both cases we recommend that you consult with a paint and stain dealer in your area for their recommendations.

We value your feedback and would like to hear back from you on how well we are doing in the following areas:

1. Customer Service
2. On Time Shipping
3. Motor Freight Delivery
4. Quality of Materials
5. Assembly Manual
6. Overall Satisfaction.



Please contact us at:

Conestoga Log Cabins & Homes
246 N. Lincoln Ave.
Lebanon, PA 17046