

2019

# LOG CABINS

BUILDING MEMORIES

ONE LOG AT A TIME

# ESCAPE

*TO CABIN LIVING*

Everlast Log™

P.5



## HIGHLIGHTS

- ✓ Mountain King P.7
- ✓ Outdoorsman P.12
- ✓ Serenity P.15
- ✓ 1,100+ Sq. Ft. Homes P.18

**Conestoga**  
LOG CABINS & HOMES

[ConestogaLogCabins.com](http://ConestogaLogCabins.com)



**Since 1983,** Conestoga Log Cabins & Homes has been making our customers' dreams become reality. Our cabins are located in every state throughout the U.S. as well as 7 foreign countries. Conestoga Log Cabins & Homes stands today as a reflection of our unending commitment to our customers and making their dreams come true.

Conestoga has become a leading provider of log cabins by building a reputation for designing, manufacturing, and supplying attractive, economical, long-lasting buildings.

Conestoga manages each new cabin from the design phase to assembly to finishing touches. We utilize the newest technology available and engineer our own logs. The result is an energy efficient cabin that is as structurally strong as it is versatile.

Let's explore your vision and see how Conestoga can help you build your dream home.



**"It was truly a joy working with Conestoga, and we are absolutely ecstatic about our new Outdoorsman cabin."  
- Sullivan County, PA**



**"...buying a Conestoga Log Cabin was a most memorable happy experience for my family... I believe I will look back on this adventure in ten years and know that it was one of the best things I have done for my family and myself." -  
Hazleton, PA**

.....

**ConestogaLogCabins.com**



246 N. Lincoln Avenue | Lebanon, PA 17046 | Tel: (717) 306-4490



# Conestoga Build

Conestoga Log Cabins & Homes makes every effort to simplify the building & assembly process long before your cabin kit ships from our 100,000 Sq. Ft. state-of-the-art manufacturing facility.



It all starts in the Drafting Department, where each log home is built electronically utilizing the latest in 3-D architectural software.



Once approved, most components of the building are sent to our highly automated manufacturing equipment. We also use carefully selected suppliers chosen not only for their quality of products but the dependability of their work.



This formula has worked for decades to the delight of our customers, and it is our commitment to making it work for you too!

To see a video of a cabin being built, please visit our website  
[ConestogaLogCabins.com/resources/videos](http://ConestogaLogCabins.com/resources/videos)



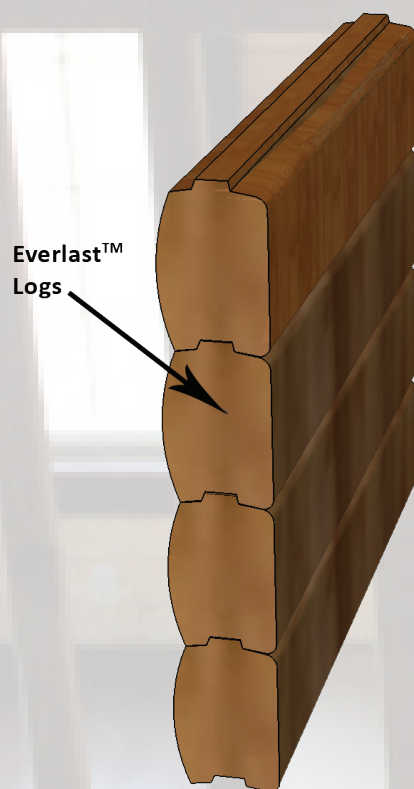
# We Can Meet Any Energy

Our log cabins and homes have never failed to meet an energy code requirement. Logs benefit from thermal mass to capture and retain heat better than traditional homes. We have an advantage over other log cabin and home companies because our Everlast™ Log is engineered to allow for longer lengths, fewer twists, checks and considerably less gapping than traditional log structures. The result is less air infiltration and maintenance that provides a more comfortable energy efficient cabin that saves you money while enjoying your log cabin.

**What is Thermal Mass?** Thermal Mass is a concept in building design and construction that describes how the walls of the building provide “inertia” against temperature fluctuations. By their very nature log cabins and log homes differ from other construction techniques, because solid wood has both moderate R-value (insulation) and significant thermal mass.

## Solid Wall

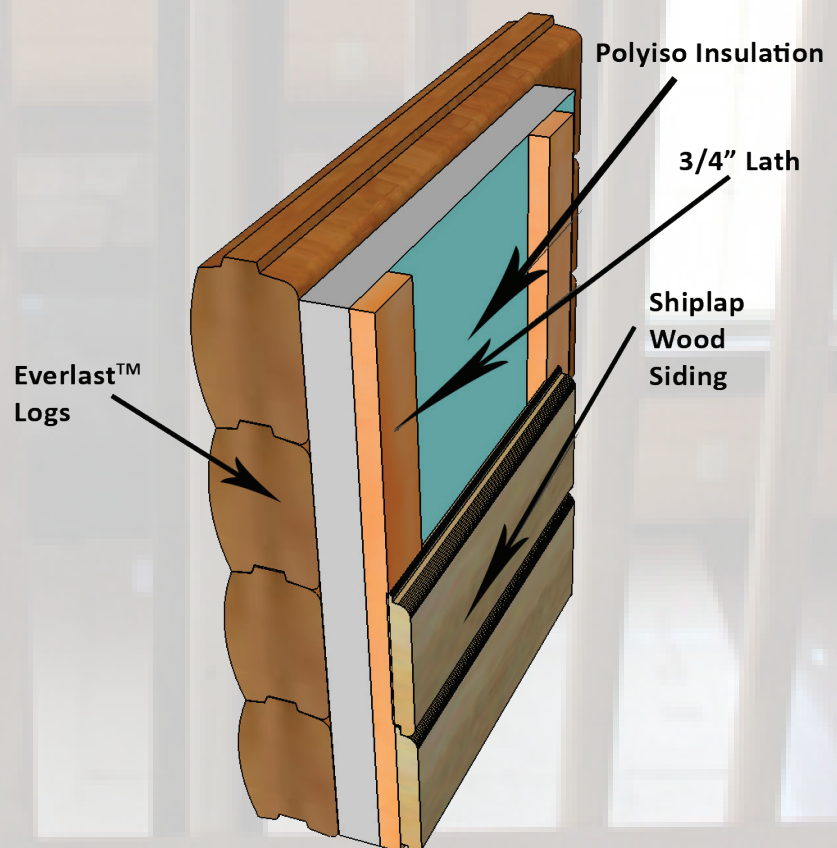
The single wall is perfectly suited for cabins that are located in moderate climates and/or are used seasonally.



## Solid Wall Siding Package

This is recommended for year round residences in cold weather climates. This package adds a layer of insulation and interior log siding to a single wall structure. This technology will meet or exceed the most stringent energy code requirements and lower utility bills, while maintaining the same log look inside your cabin.

**R-16 to R-26 Based On Thickness of Insulation**





# Conestoga's Everlast™ Log

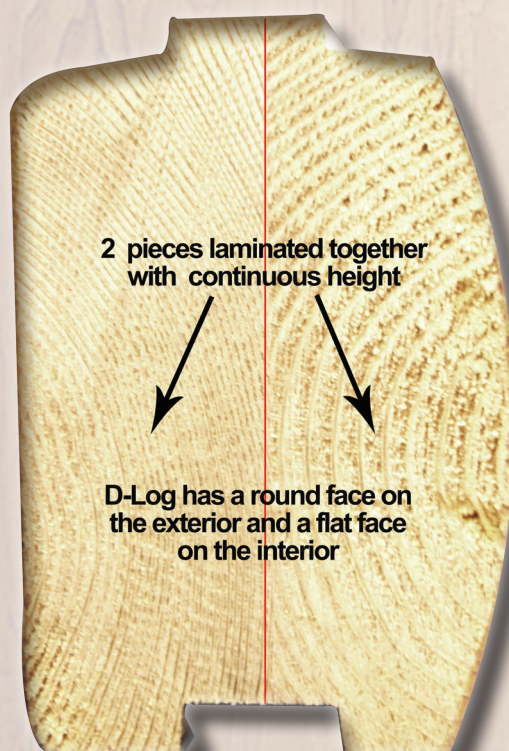
## Offers a low maintenance solution

- The Everlast™ Log is resistant to warping, twisting and settling because it is engineered to be structurally stable.
- The Everlast™ Log is resistant to movement, shrinkage, and checking, because it is kiln-dried to 15% or below moisture content.
- The Everlast™ Log is resistant to decay, because it is kiln-dried below the 19% fungi threshold.
- The Everlast™ Log is notched, cut to length, drilled, and mortised for all electric and fasteners.
- The Everlast™ Log can be up to 28' long, which eliminates unsightly log joints, reduces the possibility of air and water infiltration and improves overall energy efficiency.
- The Everlast™ log is 50% stronger than traditional logs.

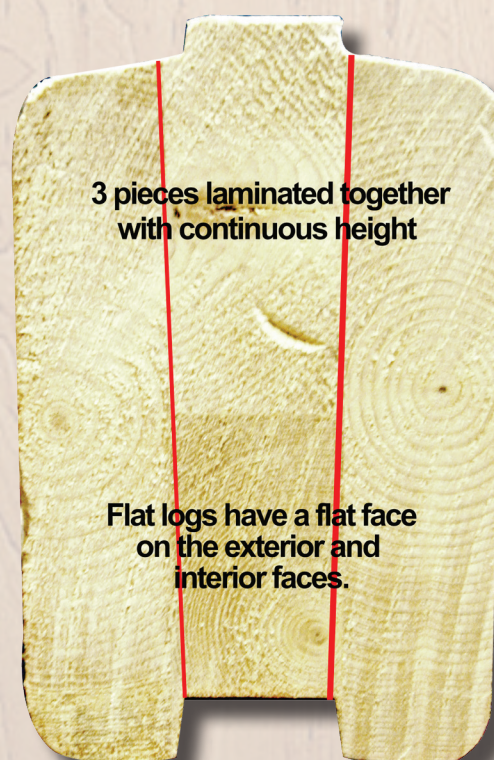
## The Stronger and More Stable Engineered Log



## D-Log



## Flat Log





# Conestoga Log Cabin & Home Owners

"As you know, the town and neighboring communities where our cabin is located was declared a national disaster area from Hurricane Irene. Our cabin suffered NO damage and is a solid Conestoga log cabin." - Windham, NY

"We enthusiastically recommend Conestoga to anyone who wants a beautiful cabin that is extremely well constructed, affordable, environmentally conscious and customizable."  
- Sullivan County, PA

"All of my expectations were met by Conestoga Log Cabins. I will certainly be recommending Conestoga as the best choice in log cabin kits." - Yellow Spring, WV

"This ended up being the absolute best home we could build for the money that we spent."  
- Portland, ME

"Where you [Conestoga] excel is in your flexibility with your team in meeting changing design requirements, delivering timely design changes and quotes." - Killeen, TX

**If you would like to speak directly to any of our customers,  
please give us a call and we can put you in touch.**

## Every Log Cabin Kit Includes:

### Floor System:

- 4" x 6" Pressure Treated Skids
- Metal Floor Trim
- Fasteners
- 2" x 6" Tongue & Groove #1 Yellow Pine Flooring

### Log Wall System:

- Everlast™ Kiln-Dried Logs: Pre-cut/Pre-drilled
- Everlast™ Kiln-Dried Gable End Logs: Pre-cut/Pre-drilled
- Caulking
- Emseal Gasket Material
- 80d/40d Nails

### Windows:

- Double Hung Low-E/Argon Vinyl Windows
- Window Bucks
- Interior & Exterior Window Trim
- Fasteners

### Doors:

- Insulated Steel 9-lite 2 Panel Exterior
- Pre-Hung 6 Panel Wood Interior Doors
- Door Bucks
- All Door Hardware
- Interior & Exterior Door Trim Fasteners

### Loft Floor System:

- Laminated Floor Joists
- Joist Hangers
- 2" x 6" T&G #1 Yellow Pine Loft Floor Boards
- Pre-manufactured Staircase with railings
- Loft Railings, Posts & Pickets
- Fasteners

### Roof System:

- Laminated Ridge Beam
- Laminated Mid-Roof Beams
- 15 lb. Felt Paper
- Gable End Trim
- 45 yr. Metal Roof
- 2" x 6" T&G Yellow Pine V Groove Roof Boards

### Interior Finish Materials:

- 2"x 4" Interior Partition Walls
- 2"x 6" Interior Partition Walls (Plumbing Walls)
- 1"x 6" Shiplap Interior Wall Boards
- Interior Baseboard Trim
- Interior Door Trim
- Pre-Hung Interior Wood Doors
- Passage Door Hardware
- Private Door Hardware
- Fasteners

### Porch Materials:

- Pressure Treated Floor Joists
- Joist Hangers
- 2" x 6" Pressure Treated Decking
- Porch Posts, Railings & Pickets
- Porch Roof Beams
- All Roofing Materials & Trims
- Gable End Webbing

### Electrical:

- Electrical Wiring & Grommets
- Boxes, Switches, Outlets & Covers
- Interior Light Fixtures & Bulbs
- Smoke Detectors
- Exterior Lights & Bulbs

### Pre-Cut Materials:

- Pre-cut/Pre-drilled Logs
- Pre-cut Floor Boards
- Pre-cut Roof Beams & Peak Logs
- Pre-cut Interior & Exterior Window/Door Trims

### Options:

- Decks
- Porch Extensions & Side Porches
- Custom Doors & Windows
- Log Wall Insulation Packages
- Floor & Ceiling Insulation
- Interior Polyurethane
- Exterior Stain
- Pier Kit
- R38 Roof Insulation
- Conventional First Floor System
- Supplemental Heating & Cooling Unit
- Kitchenette
- Screen Door Kit
- Cedar Log Furniture

Heavy Roof and Floor Loading, High Altitude, Seismic, Hurricane, Nordic, Tropical and Other Extreme Weather Building Specifications Are Available as an Upgrade.



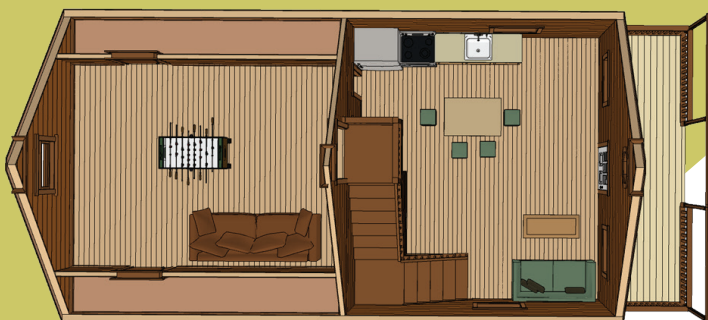
Square Footage: 1,080  
Bedrooms: 2  
Bathrooms: 1

# MOUNTAIN KING



This log cabin kit is the ultimate in cabin luxury. Take the log cabin experience to the next level with spacious open concept living quarters and loft-living accommodations.

Ideal for use as the family vacation cabin, it makes the perfect getaway from the stresses of daily life. The loft provides ample space for extra sleeping accommodations, entertainment center, game room, or whatever makes your family happy. With space for a full kitchen, holiday meals can easily be prepared at this log cabin. There is plenty of storage space for fishing gear, cross-country skis and hiking boots.



Additional large cabin and home options start on p. 18.



# BRANDYWINE

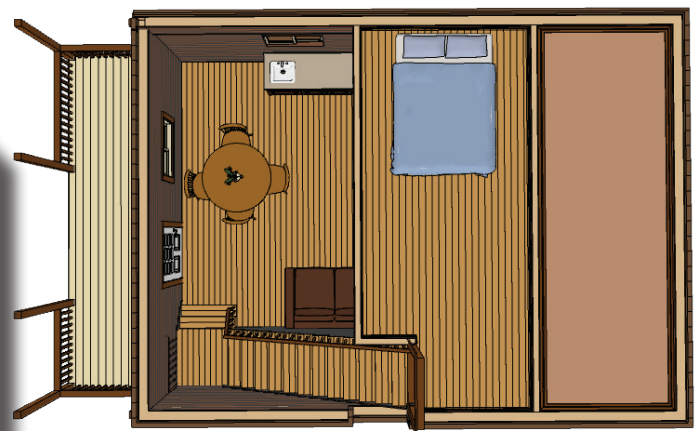
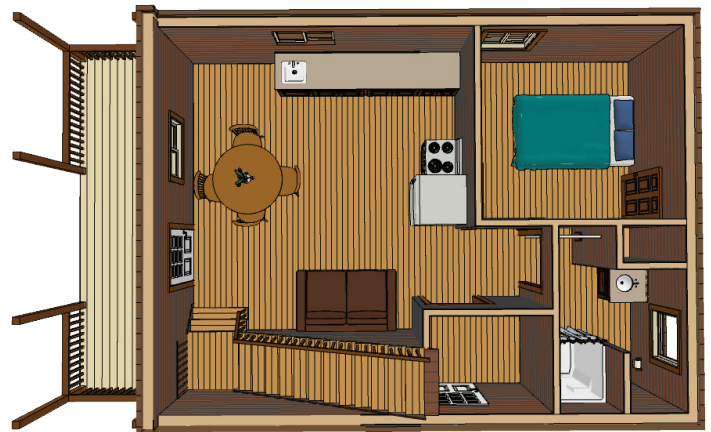
Square Footage: 740

Bedrooms: 2

Bathrooms: 1



This log cabin's 2 bedrooms and full bath coupled with an efficient, open kitchen and spacious great room make it a choice selection for cabin lovers everywhere. Large, reverse gable covered porch makes an enjoyable gathering place for friends and family looking to spend plenty of time in the great outdoors.



Images of products are for illustrative purposes only.



Sq Footage: 580  
Bedrooms: 2  
Bathrooms: 1

HERITAGE

Sq Footage: 727  
Bedrooms: 2  
Bathrooms: 1

VACATIONER



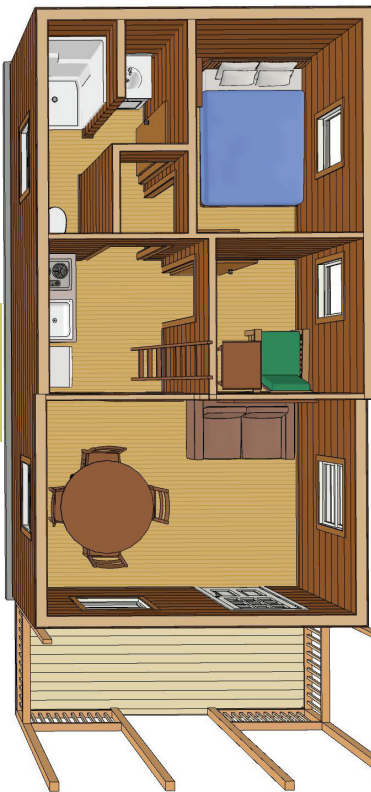
Heritage



These 14' 7" x 27' and 17' x 31' log cabins are a sound choice for the person that wants more space, more luxury, and more comfort. These cabins placed in the right setting are a vacationer's dream and include a loft and 6' covered porch.

Vacationer

Vacationer Loft





# HICKORY HILL

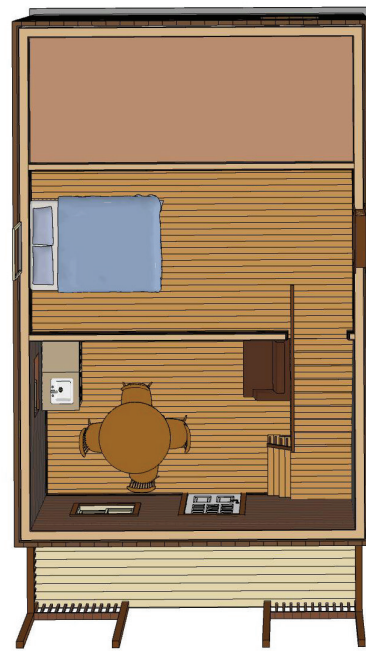
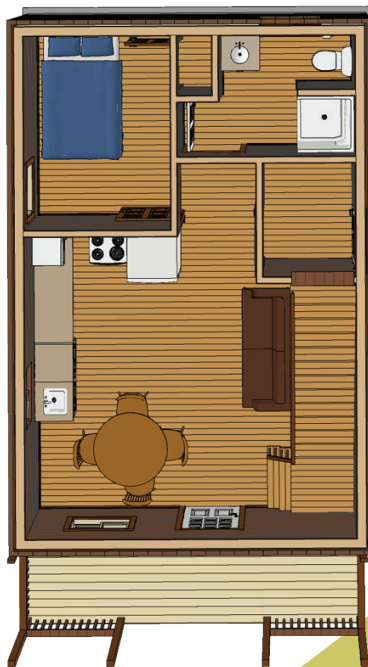
Square Footage: 667

Bedrooms: 1

Bathrooms: 1



This 18' x 27' cabin with full stairs and loft offers affordable design features at a great value. Enjoy peace and tranquility on the 6' x 18' covered porch with all the comforts of home. This 1 bedroom, 1 bathroom cabin will be a weekend getaway favorite.





Square Footage: 600  
Bedrooms: 2  
Bathrooms: 1

# TROUT RUN



This 20' x 30' log cabin is perfectly suited as a hunting or fishing cabin. Taking the traditional lodge-style approach, this log cabin has a spacious bedroom and can sleep 8 comfortably. One full bathroom, efficient kitchenette, and comfortable family room will ensure a memorable stay regardless of the season. A large 6' x 30' covered porch adorns the front of this cabin.





# OUTDOORSMAN

Square Footage: 424  
Bedrooms: 1  
Bathrooms: 1



The 14'7" x 21' log cabin is perfect for those that need full amenities and additional loft space. This is the perfect selection for a guest house, hunting or vacation cabin.





Square Footage: 408  
Bedrooms: 1  
Bathrooms: 1

## BEAR CREEK



If simplicity is what you are searching for, this log cabin is a logical choice. It has a large bedroom which comfortably sleeps four, a full bathroom with ladder access to storage above, an efficiency kitchen, and a sizable family room making it perfectly suited for living a log cabin lifestyle at an affordable price.





# BOULDER LODGE

Square Footage: 292

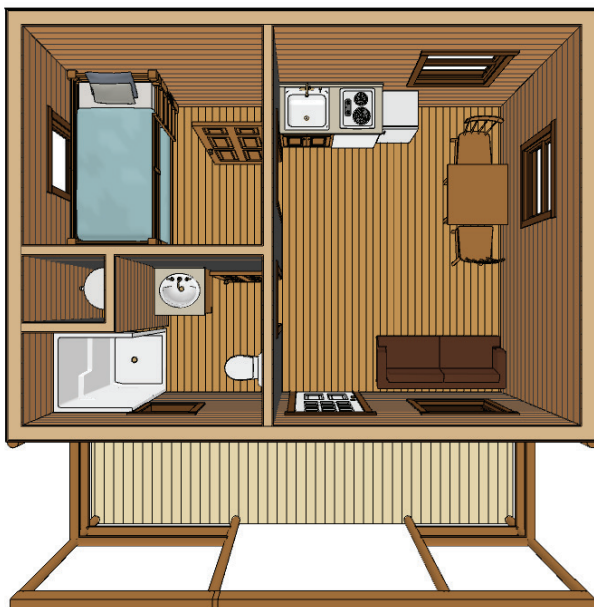
Bedrooms: 1

Bathrooms: 1

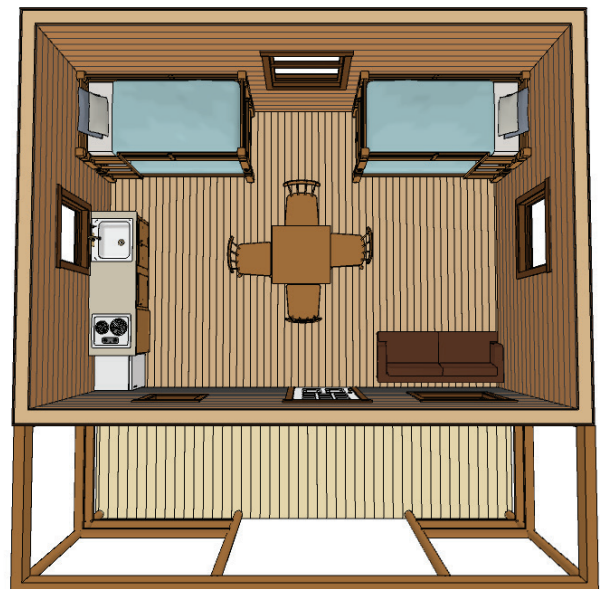


What this cabin lacks in size it makes up for in practicality. As a small and convenient solution, Boulder Lodge has one private bedroom, a full bath, and a simple kitchenette, leaving plenty of comfortable living space. The covered porch is a spacious 6' x 20' and spans the length of the cabin.

Two Room Boulder Lodge



One Room Boulder Lodge





Square Footage: 280  
Bedrooms: 1  
Bathrooms: 1

# SERENITY



**This cabin has all the charm with the convenience and privacy of two rooms and a bathroom. This versatile floor plan can be outfitted to sleep six and can be designed with master suite that can be complimented by a kitchenette, dining, or living room.**





Sq Footage: 232  
Bedrooms: 2  
Bathrooms: -

SHENANDOAH

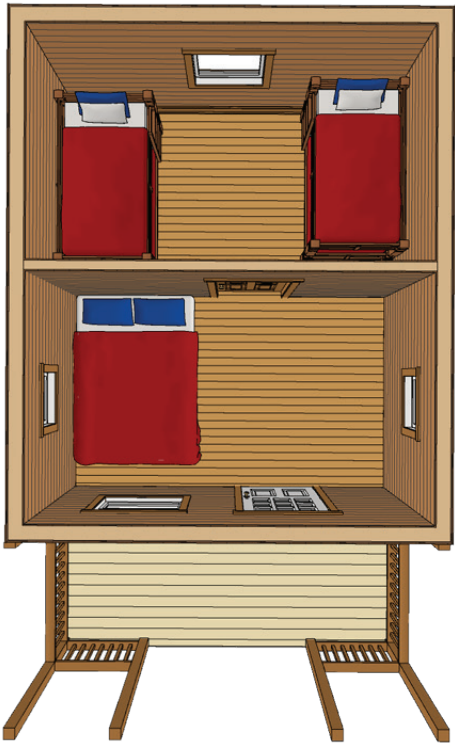
Sq Footage: 232  
Bedrooms: 1  
Bathrooms: 1

DURANGO

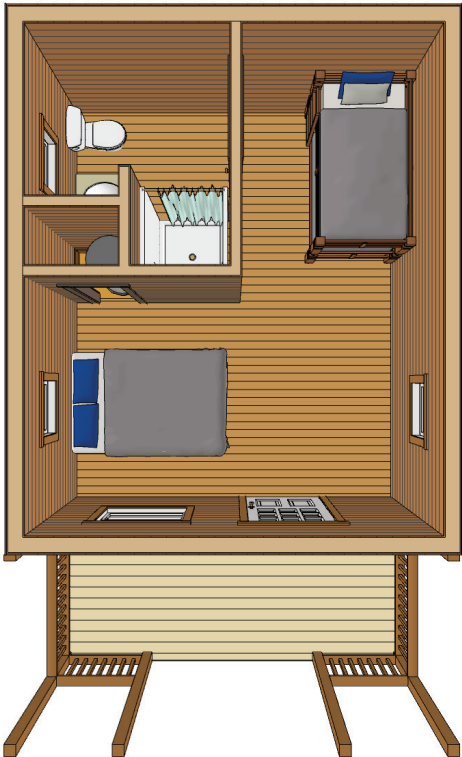


These two room, 14' x 16'-7" log cabins are ideal for hunting. Somewhere to lay your head at night that's just secure enough but still has the feel of the great outdoors. Enjoy extra bed space or have your own private bathroom. The choice is yours.

Shenandoah



Durango





Sq Footage: 195  
Bedrooms: 1  
Bathrooms: 1

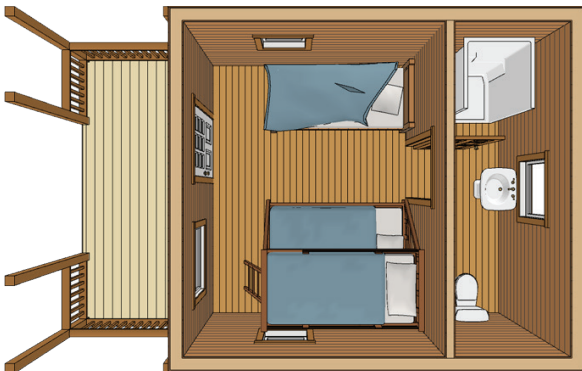
## GETAWAY

Sq Footage: 195  
Bedrooms: 2  
Bathrooms: -

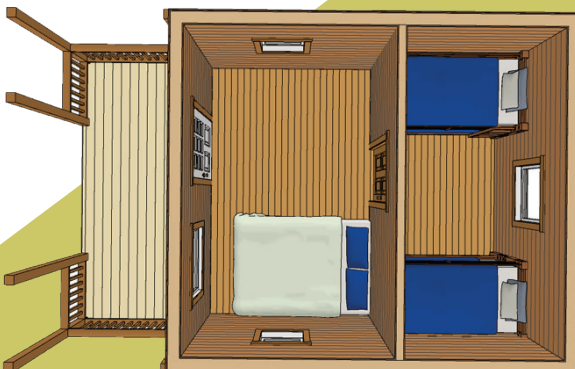
## ASPEN



Getaway



Aspen



The Getaway & Aspen are our simplest and smallest log cabins. Room for a small, efficiency bathroom or a larger open sleeping space make this a perfect option to add a little more room to any property.





# LARGER CABIN OPTIONS

1,100 - 2,500 Sq. Ft.

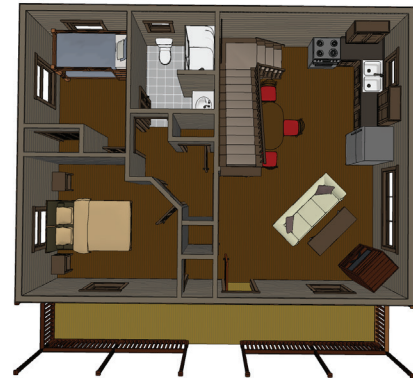


## SUSQUEHANNA

1,143 Sq. Ft.

3 Bedrooms

1 Bathroom



## MEADOWBROOK

1,215 Sq. Ft.

3 Bedrooms

2.5 Bathrooms





1,100 - 2,500 Sq. Ft.

LARGER CABIN OPTIONS

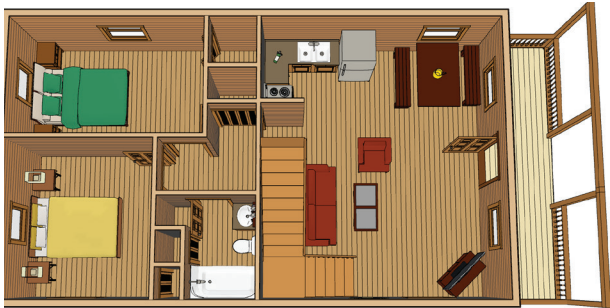


MOUNTAIN HAVEN

1,254 Sq. Ft

3 Bedrooms

2 Bathrooms



ASPEN CHALET

1,440 Sq. Ft.

3 Bedrooms

2 Bathrooms





# LARGER CABIN OPTIONS

1,100 - 2,500 Sq. Ft.

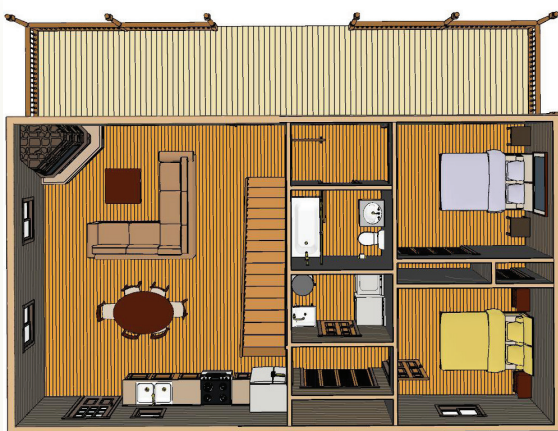


## ALPINE RIDGE

1,498 Sq. Ft.

3 Bedrooms

2 Bathrooms



## SEQUOIA

1,512 Sq. Ft.

4 Bedrooms

2 Bathrooms





1,100 - 2,500 Sq. Ft.

## LARGER CABIN OPTIONS



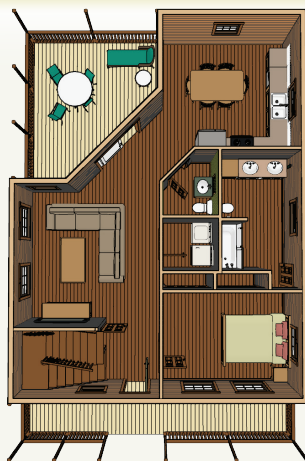
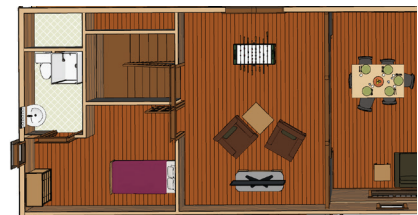
Optional Garage Shown

### McKINLEY

1,900 Sq. Ft.

3 Bedrooms

2.5 Bathrooms



### HAMPTON

2,119 Sq. Ft.

3 Bedrooms

2.5 Bathrooms





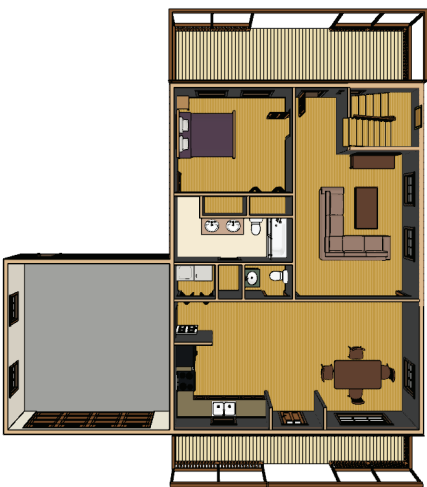
1,100 - 2,500 Sq. Ft.

# LARGER HOME OPTIONS



## KILLINGTON

2,200 Sq. Ft.  
3 Bedrooms  
2.5 Bathrooms



## WINDSOR

2,312 Sq. Ft.  
3 Bedrooms  
2.5 Bathrooms



Contact us for other home options that are available or a custom floor plan designed to meet your specific family needs.



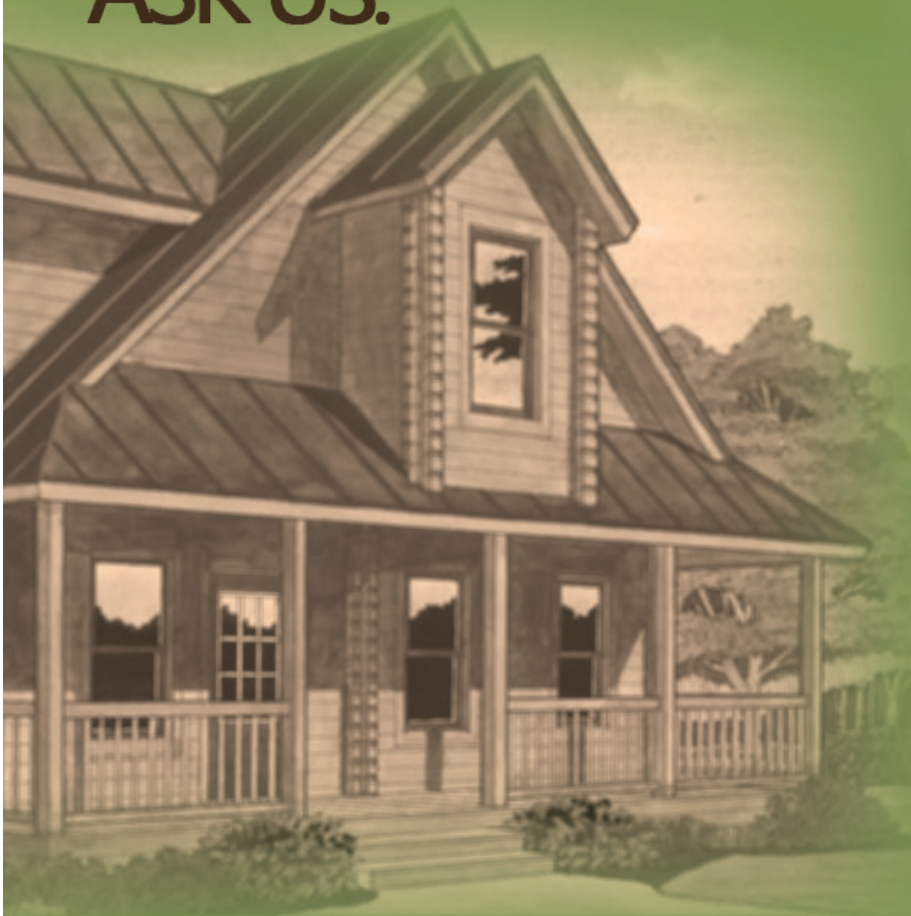
# CUSTOM BUILDINGS

We can engineer any cabin,  
home or structure to meet  
your needs and budget.

**ASK US.**

**BUILD IT!**

Designed To Fit Your Budget



DREAM IT

**Conestoga**  
LOG CABINS & HOMES

[ConestogaLogCabins.com](http://ConestogaLogCabins.com)



# Product Details

## Pier Kit (Optional)

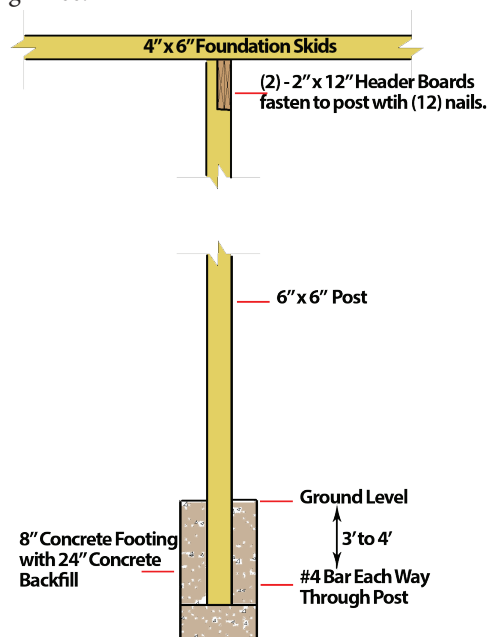
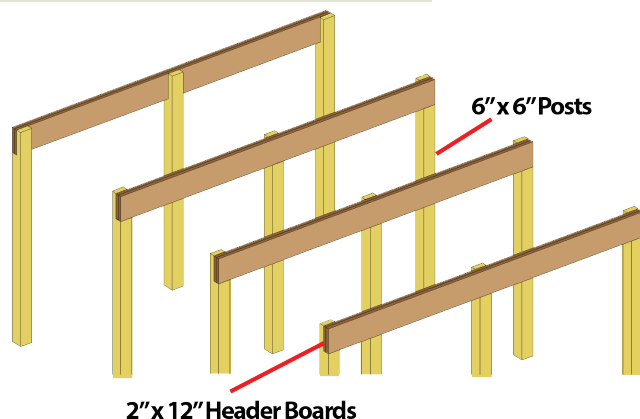
Cabins can be placed on various foundations, including slab, crawl space, basement, and pier depending on preference and land layout. When uneven land is a problem, Conestoga can offer a pier foundation kit as a solution. This foundation kit can also be used when the ground's integrity cannot hold the cabin directly or where there may be ground erosion over time. In addition to terrain issues, the pier foundation kit offers increased cabin ground clearance and access to the plumbing and electric on the underside of the cabin.

NOTE: Specifications for other types of foundations are available for an associated design free.

### Kit Includes:

- 6" x 6" Posts
- 2" x 12" Header Boards
- Nails

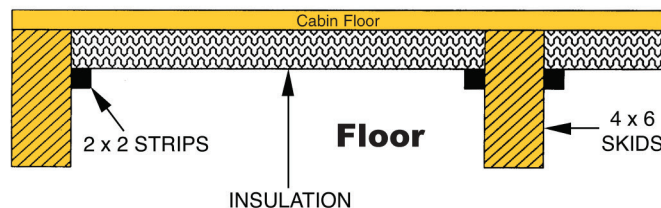
Quantity of piers varies depending on cabin size.  
Consult factory for details.



## Insulation Kit (Optional)

The insulation kit that Conestoga offers consists of 1-1/2" thick pieces of foam board cut to fit between furring strips attached to the roof. Flooring insulation is placed on the bottom side of the floor boards and held in place by 2" x 2" strips.

Higher energy codes may have other requirements and Conestoga offers an insulation kit to meet R38 standards. Information about the wall insulation kit can be found on page 4 in this catalog.





# Product Details

## Windows

Conestoga uses high quality casement and double hung windows. As a standard all our windows are Low-E/Argon and utilize Warm-Edge Technology to enhance energy performance.



Conestoga uses only high-quality, number-one Southern Yellow Pine flooring.

Upgrades available to any type of finished flooring.



#1 Southern Yellow Pine  
(Conestoga's Choice)



#1 Yellow Pine

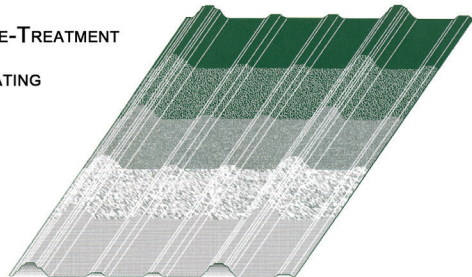
## Metal Roof (Shingles Optional)

### 29 GAUGE FULL HARD STEEL



ZINC PHOSPHATE PRE-TREATMENT

ZINC COATING



- Seamless Roofing System
- Sustainable and longer lasting than a traditional roof, with a life expectancy of 45 years
- Will never decompose and when it is time to be replaced, steel is recyclable and reusable
- Shingles roof optional

45-Year Paint Warranty

## Engineering Services

Conestoga Log Cabins & Homes offers log cabin kits that are fully engineered, pre-cut and ready-to-assemble. Our log cabin kits range from cozy 12 x 12 two-room bungalows to spacious 2,000+ SQF grand log cabins with multiple bedrooms, baths and versatile loft arrangements.

Our standard line of log cabin kits are designed to appeal to a wide range of needs. Moreover, we offer custom design services and will engineer and produce a log cabin kit to meet your specific needs.

Want to see what your custom designed building will look like? We can do one better, you can walk through it with our new "fly through" 3D videos. We can even furnish it just how you would like to see it! Or look at it from an aerial view and see just how much space your new log building has to offer.



# Assembly

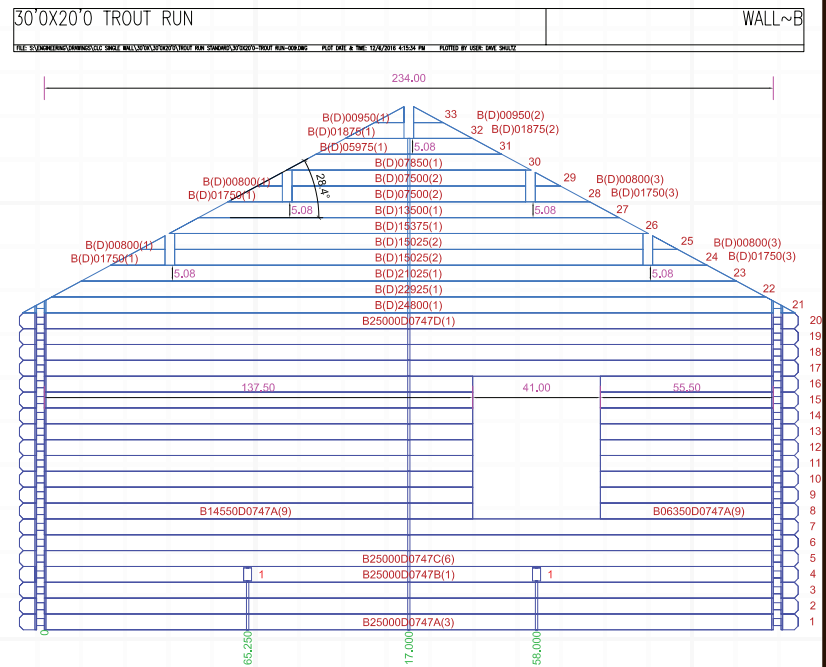
We make it easy for home owners or builders without log home construction experience to build our log cabins. Every log has a label attached with a unique number that corresponds to plan drawings. This unique number enables you to know the exact location of every log during the construction process.

The numbering system not only ensures organization and easy identification, but facilitates technical support if needed. If a question arises during construction our technical support team is available to provide assistance. By providing the log number our technicians will know exactly what you're working on and how to better assist you.

In addition to our user friendly log numbering system, detailed assembly instructions, plans and diagrams accompany every Conestoga log home kit. Telephone technical support is included with every purchase. We also offer an extensive library of assembly videos. In addition, an assembly crew can be made available to travel worldwide.

## Need help with your log home assembly kit?

In case a question arises, Conestoga's knowledgeable staff is available for assistance. Conestoga is committed to providing customers with quality support, materials and supplies.



# Service

Whether you're an individual or an organization, Conestoga has experienced construction teams available to assemble our structures within the United States and abroad.

With a Conestoga team you can be assured you have the skill and expertise of trained craftsmen. Conestoga's teams provide a knowledge level that ensures an efficient and quality installation at a competitive price.

For most individuals and organizations, time seems to be in demand. Gaining more of this resource is a logical reason for hiring a Conestoga team. Experience peace of mind in knowing your newest investment has been installed with the highest level of workmanship provided by a Conestoga construction team.



- Competitive Pricing
- Efficient
- Trained Personnel Ensure Quality
- Satisfaction Guaranteed



# F. A. Q.

## **What is the average cost per square foot for both cabins and homes?**

For cabins under 800 SQF, the kit price would be around \$60/SQF. A larger home would be around \$80/SQF. A rough estimate for a turnkey cabin would be double the kit price. This includes excavation, foundation, utilities, and more so that the log structure is ready for occupants. The price would be more for longer driveways, cabins built on a hill, upgrades, etc. More information can be found at: [ConestogaLogCabins.com/log-cabins-kit-turn-key-cost/](http://ConestogaLogCabins.com/log-cabins-kit-turn-key-cost/).

## **Do your logs come from renewable forest practices?**

Yes, all our logs come from Forest Stewardship Council (FSC) certified vendors. The engineered logs originate from trees from planted forests and have a much smaller carbon footprint than other log systems.

## **What is an average time for delivery from the time of a purchase order?**

While this can vary based on size of the cabin, time of year ordered, and customization, the time from sign-off of building plans to shipping is about 60 days. The time from order placed to sign-off of building plans can be days for a standard cabin to months for larger complex homes that require numerous customer requested revisions.

## **How long does it take to assemble?**

The size of the building and the number of people assembling has a significant impact. Cabins under 800 SQF with a crew of three people should take about three weeks to assemble a basic cabin. Additional time should be added for foundation, running utilities, obtaining construction permits and staining. With larger log homes, with full insulation and finishing, the time would be a few months. We have a crew that can assemble the kit worldwide and would work with your local general contractor. We also have in-house technical support for those that self-build. Here is a link to assembly videos: <http://conestogalogcabins.com/category/assembly-videos/>.

## **How often is it recommended to re-caulk between the logs?**

Because of our engineered logs, there is no need to caulk between the logs. Caulk is used where the logs cross, such as the corners of the cabin. It is recommended to re-stain every five years, which is when the caulk should be inspected and re-caulked as needed.

## **What are the different grades of insulation used?**

We use both fiberglass and Polyiso board. The fiberglass can be R-19 to R-38 and is typically used in floors and ceilings. If wall insulation is needed, one or two layers of Polyiso board is installed. Our typical four season log home has one layer of wall insulation equal to R-16. We have log homes in Alaska and many other cold climates and can always meet the local energy code requirements.

## **Is there a choice of roofs and if so, what are the different types?**

We use both shingles and metal in all colors. Our metal roof has a 45 year warranty and shingles have 25-35 year warranty.

## **What type of foundation is recommended?**

Our log buildings have been built on many different types of foundations. Typical foundations are slabs, crawl spaces, piers or full basements.

## **What is the warranty on the material used?**

The entire cabin has a one year warranty. Specific materials have longer warranties, such as the roof for 25-45 years and windows for 20 years. The logs are warranted against splitting for life.

## **Is there a warranty on the assembly and construction?**

A typical construction warranty of one year on the entire cabin is provided. Technical support is also provided free of charge.

## **Is there a strong sound barrier from the exterior?**

Wood naturally absorbs sound, which is why it is used along highways for sound barrier walls. All log cabins provide significantly better sound protection than traditional building systems. Because of less movement and the tight seal of our Everlast™ logs, our cabins are an excellent sound barrier.

## **Does extreme humidity or cold affect the logs and the caulking?**

We have cabins in tropical climates and the cold region of Alaska as well as in all 50 states and 7 countries. Wood grows naturally in all climates. The specific species of wood we use has proven to withstand all climates. We can also meet any snow load or wind load building requirements. One of our customers told us, "The town and neighboring communities where our cabin is located was declared a national disaster area from Hurricane Irene. Our cabin suffered NO damage and is a solid Conestoga log cabin."



