



Exclusive Provider & Builder of
Quality Log Homes in Sugarloaf South
at Eagle Rock Resort

Experience
THE SIMPLE LIFE



EAGLE ROCK
• RESORT •
BLUE MOUNTAINS, PA
www.eaglerockresort.com

SIMPLIFIED

Conestoga Log Cabins & Homes • 246 North Lincoln Avenue • Lebanon, PA 17046 • (800) 914-4606 • ConestogaLogCabins.com

Eagle Rock Resort • 1031 Valley of Lakes • Hazleton, PA 18202 • (570) 384-3223 • EagleRockResort.com

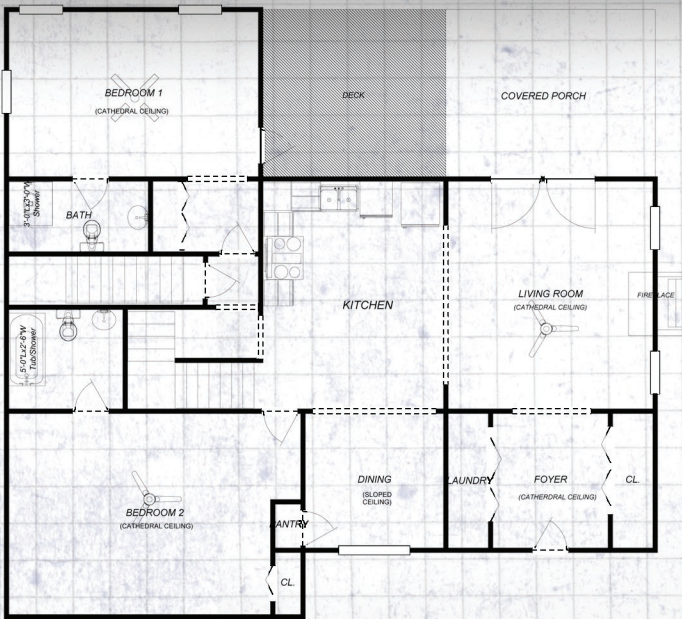
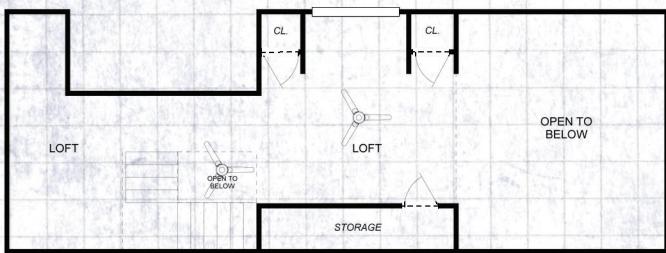
SUGARLOAF



FLOOR PLAN

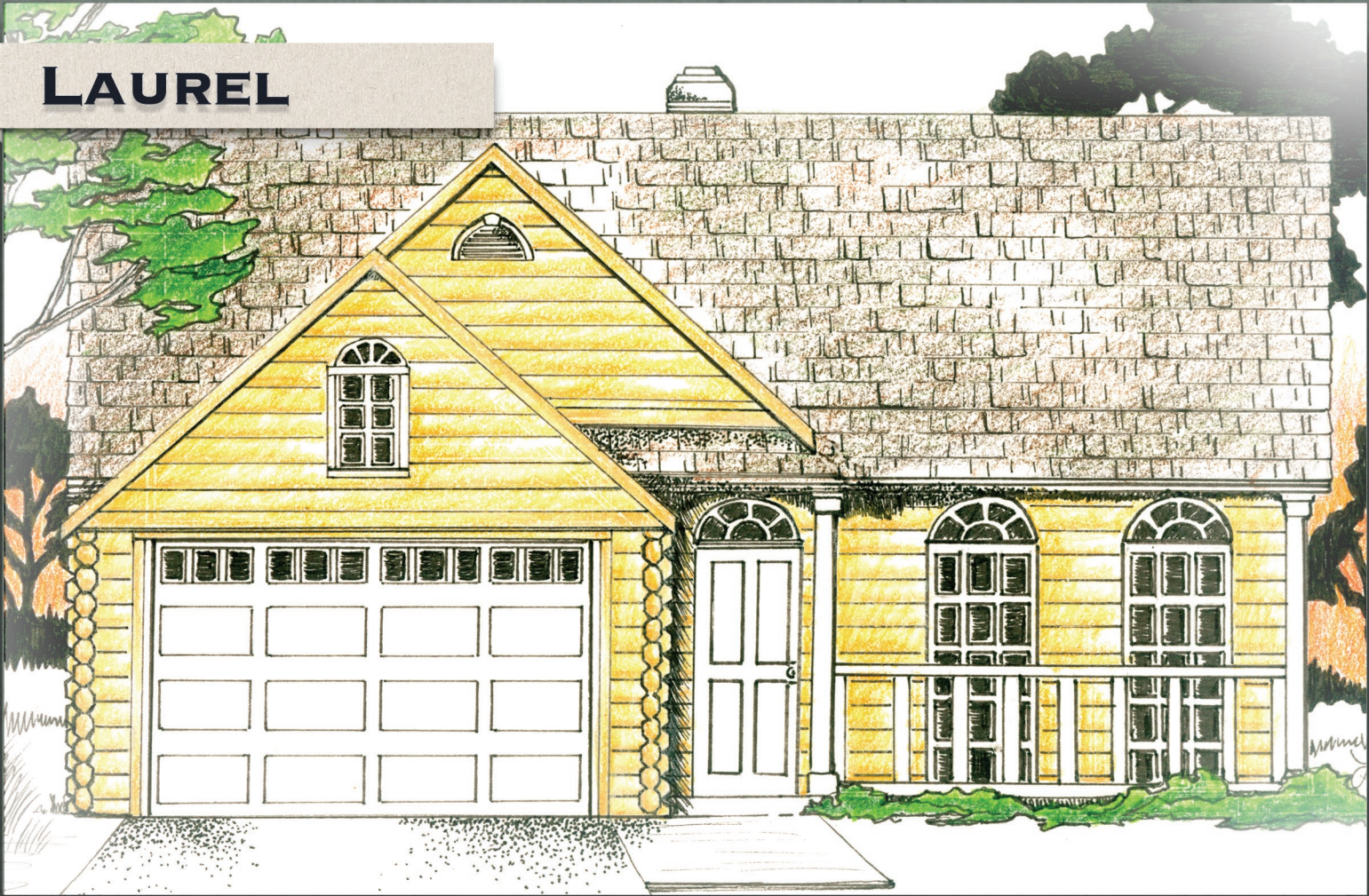
SQ FT:
1,600

ALSO AVAILABLE: FULL BASEMENT



The Sugarloaf Log Home from Conestoga offers distinctive architectural appeal with numerous wings, multiple covered porches and attractive roof lines. Inside are two large bedrooms, two and a half baths, an open dining/kitchen area and a great room with fireplace. Upstairs is a convenient loft overlooking the great room. Built with Everlast logs for the ultimate in durability and low maintenance and with a full basement option available, the Sugarloaf is the perfect place for slope-side living.

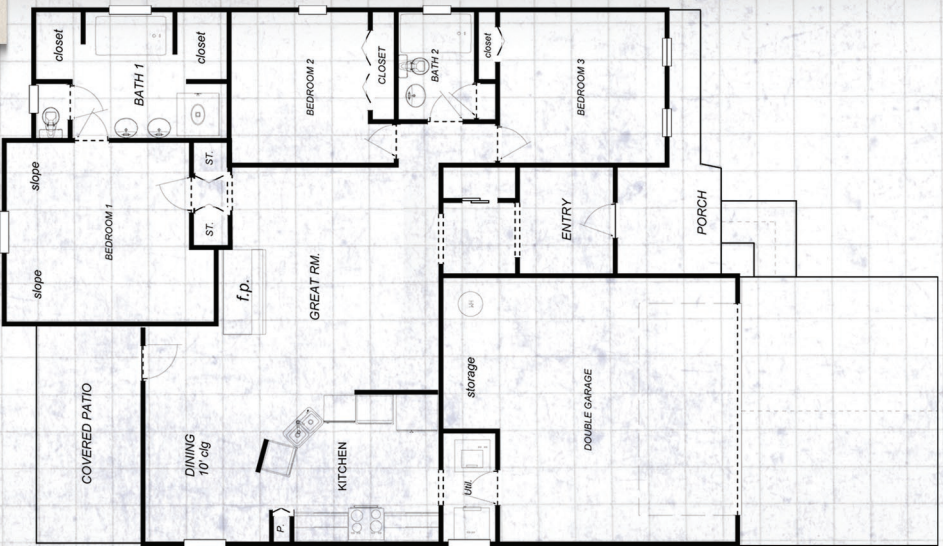
LAUREL



FLOOR PLAN

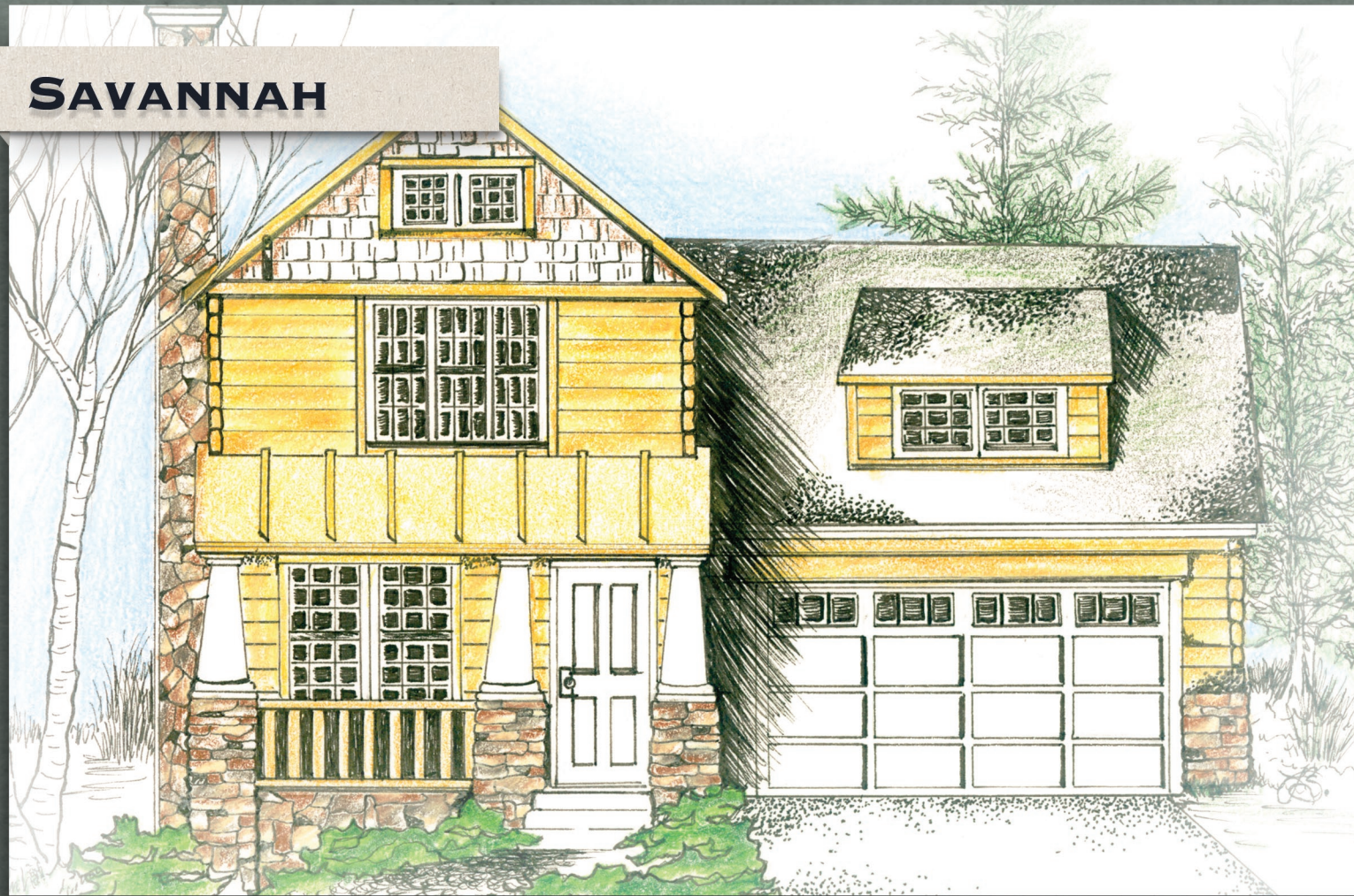
SQ FT:
1,600

ALSO AVAILABLE: FULL BASEMENT



The Laurel home from Conestoga is traditional in style yet distinctive in floor plan and architecture. This single-level home features 3 bedrooms, 2 baths, great room, and a covered patio just off the open and spacious kitchen (featuring a breakfast bar) and dining room. This home also features a double garage with ample storage. Constructed of Everlast™ logs from Conestoga for long-lasting and trouble-free performance, the Laurel is an excellent choice for those who require style and simplicity.

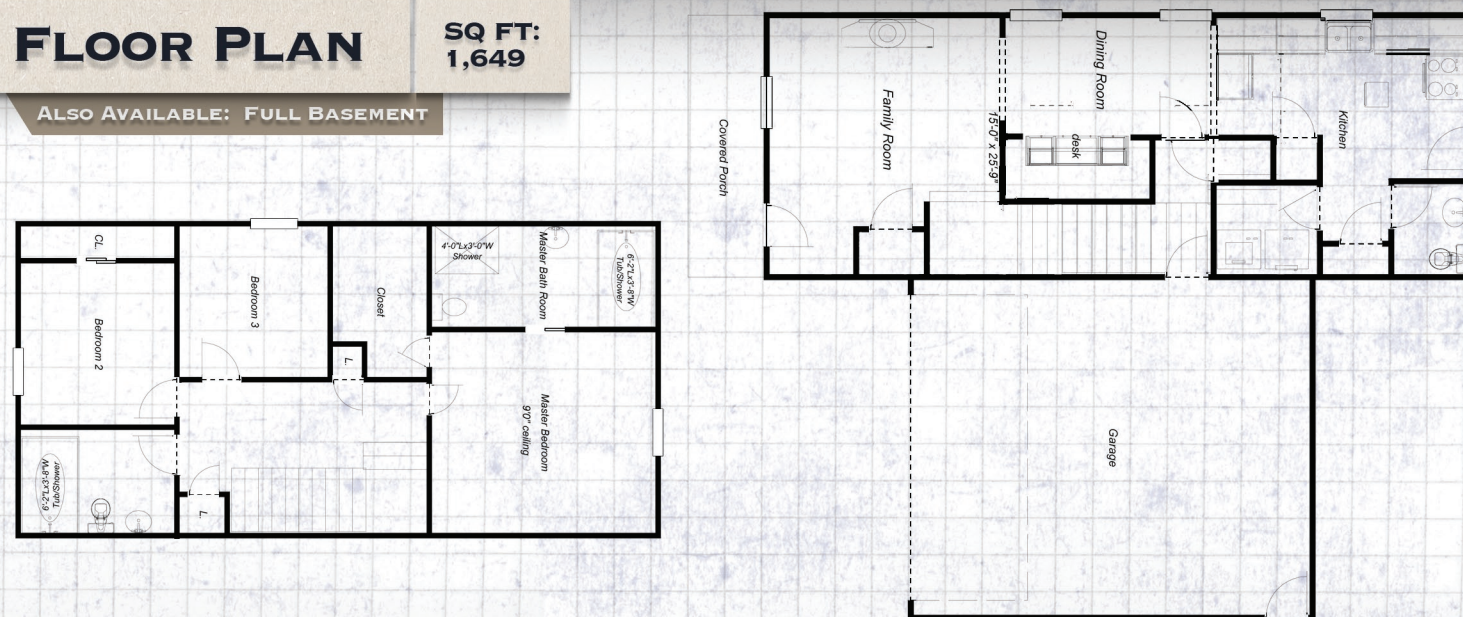
SAVANNAH



FLOOR PLAN

SQ FT:
1,649

ALSO AVAILABLE: FULL BASEMENT



The country-style Savannah home from Conestoga provides classic architectural appeal with two stories, gable roofing, covered porch, and an attached garage with two bays. Inside are 3 large bedrooms, 2 baths, a spacious kitchen and dining area, and a spacious family room with a fireplace. Built with Everlast™ logs for the ultimate in durability and low maintenance, and outfitted with every necessity, the Savannah is the perfect place for you and your family.

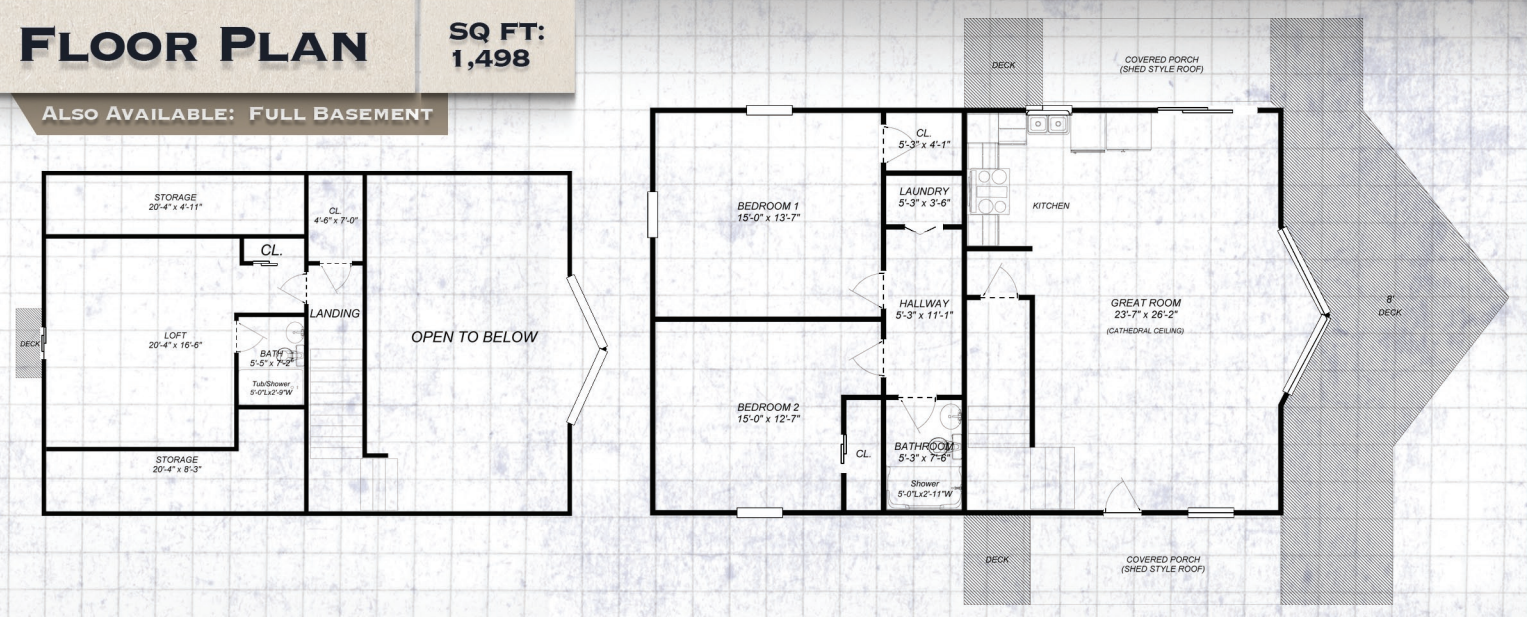
ALPINE RIDGE



FLOOR PLAN

SQ FT:
1,498

ALSO AVAILABLE: FULL BASEMENT



A spacious and inviting log home, the Alpine Ridge from Conestoga is notable for its high-pitched roof, impressive glassed-in prow front and a considerable wrap-around deck with covered porches. The floor plan features three large bedrooms, a massive great room with fireplace, a roomy loft, two bathrooms and plenty of storage space. Conestoga's Everlast logs are used in construction assuring trouble-free durability and weather-tight finish. Built for the mountains, the Alpine is certain to please the ski enthusiast. Full basement option available.

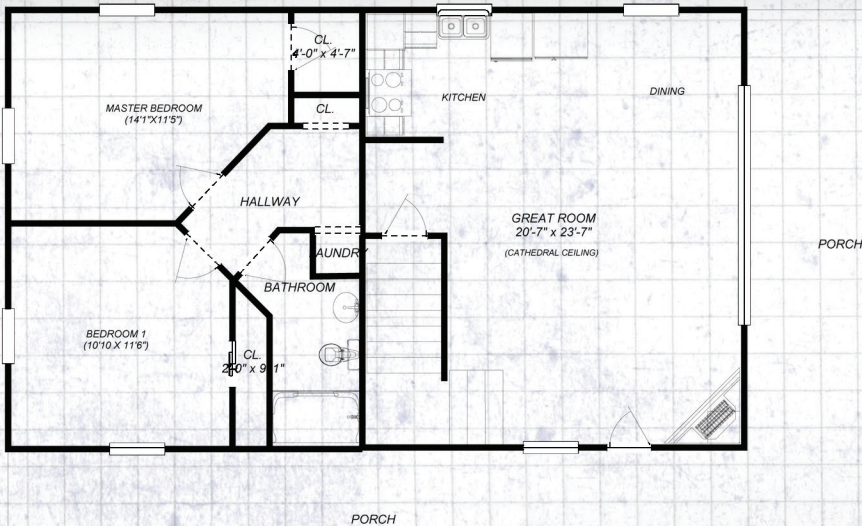
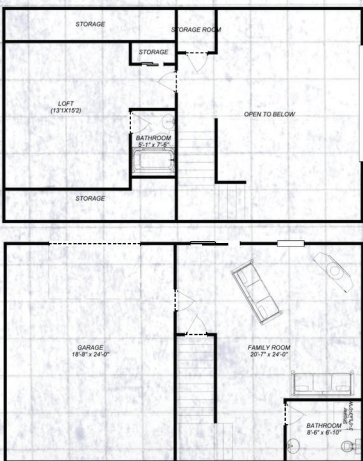
ASPEN CHALET



FLOOR PLAN

SQ FT:
1,440

ALSO AVAILABLE: FULL BASEMENT



The essence of the Aspen is its simplicity which makes it an exceptional value in loft-style living and one of Conestoga's most popular models. Inside are three bedrooms, two bathrooms, an open dining/kitchen area and a great room with fireplace; upstairs the loft overlooks the great room. Around the Aspen is an expansive covered porch. Constructed of Everlast logs from Conestoga for long-lasting and trouble-free performance, the Aspen is an excellent choice for a slope-side vacation or weekend home. Full basement option available.

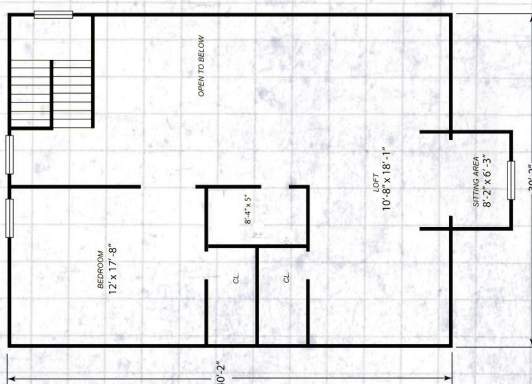
KILLINGTON



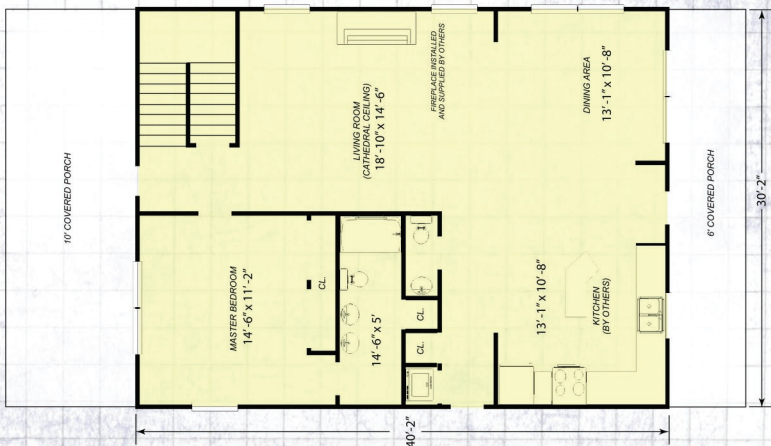
FLOOR PLAN

SQ FT:
2,200

OPTIONAL GARAGE AVAILABLE



Indicates area covered by loft.



If style coupled with efficiency is what you're looking for, the Killington is a home with lots of appeal. This 30' x 40' cabin homes large, open floor plan features a 1st floor master bedroom, large living room, dining area and open inviting kitchen. The second floor has a large loft for added sleeping or living space and a private 2nd bedroom. This cabin has lots of storage and plenty of space for a large family, lots of friends or both.